

Anti-Phospho-JUN-S63 antibody [S3MR] (STJ11102553)

STJ11102553

GENERAL INFORMATION

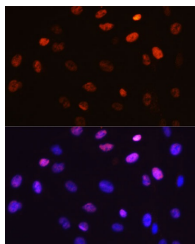
Product Type	Primary antibodies
Short Description	
Applications	WB/IF/ICC/ELISA
Host/Source	Rabbit
Reactivity	Human/Mouse/Rat

PRODUCT PROPERTIES

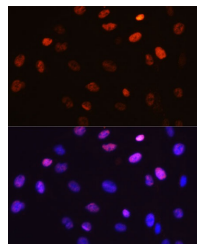
Clonality	Monoclonal
Clone ID	S3MR
Concentration	Lot specific
Conjugation	Unconjugated
Purification	Affinity purification
Dilution Range	WB:1:500-1:2000 IF/ICC:1:50-1:200 ELISA:Recommended starting concentration is 1 Mu g/mL. Please optimize the concentration based on your specific assay requirements.
Formulation	PBS with 0.02% Sodium Azide, 0.05% BSA, 50% Glycerol, pH 7.3.
Isotype	IgG
Storage Instruction	Store at -20°C for up to 1 year from the date of receipt, and avoid repeat freeze-thaw cycles.

TARGET INFORMATION

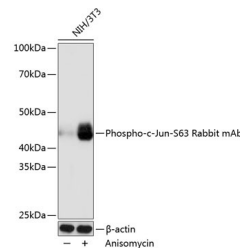
Gene ID	3725
Gene Symbol	JUN
Uniprot ID	JUN_HUMAN
Immunogen	LTSPDV
Immunogen Region	
Specificity	A synthetic phosphorylated peptide around S63 of human c-Jun (P05412).
Immunogen Sequence	LTSPDV



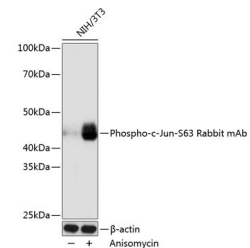
Western blot analysis of extracts of NIH/3T3 cells, using Phospho-c-Jun-S63 rabbit monoclonal antibody (STJ11102553) at 1:1000 dilution. NIH/3T3 cells were treated by Anisomycin (25 µg/mL) at 37 °C for 30 minutes. Secondary antibody: HRP Goat Anti-rabbit IgG (H+L) at 1:10000 dilution. Lysates/proteins: 25µg per lane. Blocking buffer: 3% non-fat dry milk in TBST. Detection: ECL Basic Kit. Exposure time: 1s.



Immunofluorescence analysis of C6 cells using Phospho-c-Jun-S63 Rabbit monoclonal antibody (STJ11102553). Secondary antibody: Cy3 Goat Anti-Rabbit IgG (H+L) at 1:500 dilution. Blue: DAPI for nuclear staining.



Immunofluorescence analysis of C6 cells using Phospho-c-Jun-S63 antibody (STJ11102553). Blue: DAPI for nuclear staining.



Western blot analysis of lysates from NIH/3T3 cells, using Phospho-c-Jun-S63 Rabbit monoclonal antibody (STJ11102553) at 1:1000 dilution. NIH/3T3 cells were treated by Anisomycin (25 µg/mL) at 37 °C for 30 minutes. Secondary antibody: HRP Goat Anti-Rabbit IgG (H+L) (STJ5000856) at 1:10000 dilution. Lysates/proteins: 25 µg per lane. Blocking buffer: 3% nonfat dry milk in TBST. Detection: ECL Basic Kit. Exposure time: 1s.

This product is suitable for in-vitro studies under the RESEARCH USE ONLY [RUO] licence. This product must not be used as for diagnostic or other medical purposes.
St John's Laboratory Ltd, Knowledge Dock Business Centre, University Way, London, E16 2RD | Tel: 0208 223 3081