

**Anti-A2M antibody (1200-1300) [S0MR] (STJ11102540)**  
STJ11102540

**GENERAL INFORMATION**

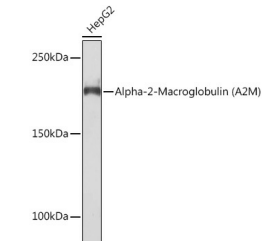
<b>Product Type</b>	Primary antibodies
<b>Short Description</b>	
<b>Applications</b>	WB/IHC-P/IF/ICC/ELISA
<b>Host/Source</b>	Rabbit
<b>Reactivity</b>	Human/Mouse/Rat

**PRODUCT PROPERTIES**

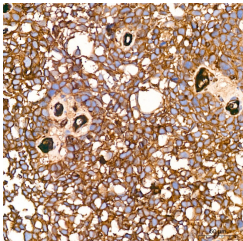
<b>Clonality</b>	Monoclonal
<b>Clone ID</b>	S0MR
<b>Concentration</b>	Lot specific
<b>Conjugation</b>	Unconjugated
<b>Purification</b>	Affinity purification
<b>Dilution Range</b>	WB:1:500-1:1000 IHC-P:1:200-1:2000 IF/ICC:1:100-1:400 ELISA:Recommended starting concentration is 1 Mu g/mL. Please optimize the concentration based on your specific assay requirements.
<b>Formulation</b>	PBS with 0.02% Sodium Azide, 0.05% BSA, 50% Glycerol, pH 7.3.
<b>Isotype</b>	IgG
<b>Storage Instruction</b>	Store at -20°C for up to 1 year from the date of receipt, and avoid repeat freeze-thaw cycles.

**TARGET INFORMATION**

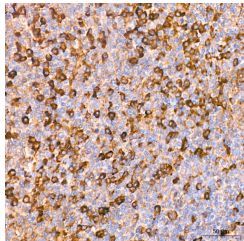
<b>Gene ID</b>	2
<b>Gene Symbol</b>	A2M
<b>Uniprot ID</b>	A2MG_HUMAN
<b>Immunogen</b>	
<b>Immunogen Region</b>	1200-1300
<b>Specificity</b>	A synthetic peptide corresponding to a sequence within amino acids 1200-1300 of human Alpha-2-Macroglobulin (A2M) (P01023).
<b>Immunogen Sequence</b>	QAPSAEVMETSYVLLAYLTA QPAPTSEDLTSATNIVKWIT KQNAQGGFSSTQDVTVALH ALSKYGAATFTRTGKAAQVT IQSSGTFSSKFQVDNNRLL L



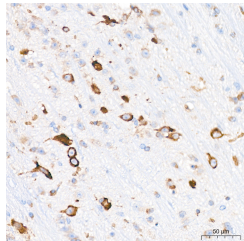
Western blot analysis of extracts from Hep G2 cells, using Alpha-2-Macroglobulin (Alpha-2-Macroglobulin (A2M)) rabbit monoclonal antibody (STJ11102540) at 1:1000 dilution. Secondary antibody: HRP Goat Anti-rabbit IgG (H+L) (STJSD00856) at 1:10000 dilution. Lysates/proteins: 25 Mu g per lane. Blocking buffer: 3% non-fat dry milk in TBST. Detection: ECL Basic Kit. Exposure time: 90s.



Immunohistochemistry analysis of Alpha-2-Macroglobulin (A2M) in paraffin-embedded human cervix cancer tissue using Alpha-2-Macroglobulin (A2M) rabbit monoclonal antibody (STJ11102540) at a dilution of 1:200 (40x lens). High pressure antigen retrieval was performed with 0.01 M citrate buffer (pH 6.0) prior to immunohistochemistry staining.



Immunohistochemistry analysis of Alpha-2-Macroglobulin (A2M) in paraffin-embedded human tonsil tissue using Alpha-2-Macroglobulin (A2M) rabbit monoclonal antibody (STJ11102540) at a dilution of 1:200 (40x lens). High pressure antigen retrieval was performed with 0.01 M citrate buffer (pH 6.0) prior to immunohistochemistry staining.



Immunohistochemistry analysis of Alpha-2-Macroglobulin (A2M) in paraffin-embedded mouse brain tissue using Alpha-2-Macroglobulin (A2M) rabbit monoclonal antibody (STJ11102540) at a dilution of 1:200 (40x lens). High pressure antigen retrieval was performed with 0.01 M citrate buffer (pH 6.0) prior to immunohistochemistry staining.

This product is suitable for in-vitro studies under the RESEARCH USE ONLY [RUO] licence. This product must not be used as for diagnostic or other medical purposes.  
St John's Laboratory Ltd, Knowledge Dock Business Centre, University Way, London, E16 2RD | Tel: 0208 223 3081