

Anti-SLC1A3 antibody (150-250) [S1MR] (STJ11102531)
STJ11102531

GENERAL INFORMATION

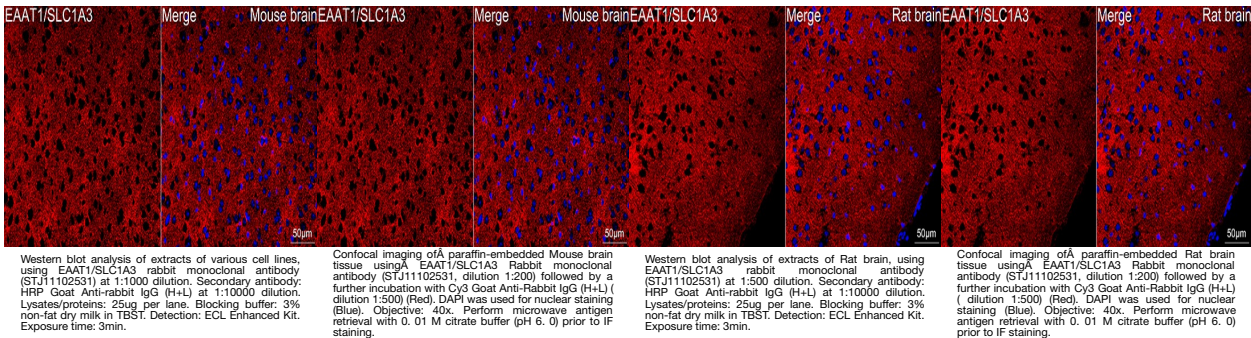
Product Type	Primary antibodies
Short Description	
Applications	WB/IHC-P/IF/ICC/ELISA
Host/Source	Rabbit
Reactivity	Mouse/Rat

PRODUCT PROPERTIES

Clonality	Monoclonal
Clone ID	S1MR
Concentration	Lot specific
Conjugation	Unconjugated
Purification	Affinity purification
Dilution Range	WB:1:500-1:2000 IHC-P:1:200-1:2000 IF/ICC:1:200-1:800 ELISA:Recommended starting concentration is 1 Mu g/mL. Please optimize the concentration based on your specific assay requirements.
Formulation	PBS with 0.02% Sodium Azide, 0.05% BSA, 50% Glycerol, pH 7.3.
Isotype	IgG
Storage Instruction	Store at -20°C for up to 1 year from the date of receipt, and avoid repeat freeze-thaw cycles.

TARGET INFORMATION

Gene ID	6507
Gene Symbol	SLC1A3
Uniprot ID	EEA1_HUMAN
Immunogen	
Immunogen Region	150-250
Specificity	A synthetic peptide corresponding to a sequence within amino acids 150-250 of human EEA1/SLC1A3 (P43003).
Immunogen Sequence	GTKENMHREGKIVRTAADA FLDLRNMFPPNLVEACFKQ FKTNYEKRSFKVPIQANETL VGAVINNVEAMETLTRITE ELVPVPGSVNGVNALGLVWF S



This product is suitable for in-vitro studies under the RESEARCH USE ONLY [RUO] licence. This product must not be used as for diagnostic or other medical purposes.
St John's Laboratory Ltd, Knowledge Dock Business Centre, University Way, London, E16 2RD | Tel: 0208 223 3081