

Anti-TUBG1 antibody (231-451) [S9MR] (STJ11102519)
STJ11102519

GENERAL INFORMATION

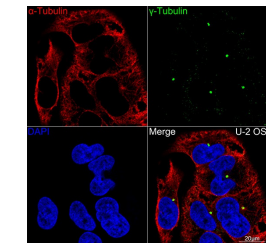
Product Type	Primary antibodies
Short Description	
Applications	WB/IHC-P/IF/ICC/ELISA
Host/Source	Rabbit
Reactivity	Human/Mouse/Rat

PRODUCT PROPERTIES

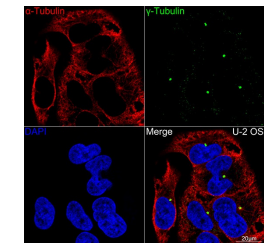
Clonality	Monoclonal
Clone ID	S9MR
Concentration	Lot specific
Conjugation	Unconjugated
Purification	Affinity purification
Dilution	WB:1:1000-1:6000
Range	IHC-P:1:200-1:2000 IF/ICC:1:100-1:1000 ELISA:Recommended starting concentration is 1 Mu g/mL. Please optimize the concentration based on your specific assay requirements.
Formulation	PBS with 0.02% Sodium Azide, 0.05% BSA, 50% Glycerol, pH 7.3.
Isotype	IgG
Storage	Store at -20°C for up to 1 year from the date of receipt, and avoid repeat freeze-thaw cycles.
Instruction	

TARGET INFORMATION

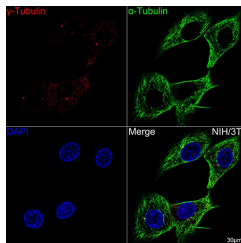
Gene ID	7283
Gene Symbol	TUBG1
Uniprot ID	TBG1_HUMAN
Immunogen	
Immunogen Region	231-451
Specificity	Recombinant fusion protein containing a sequence corresponding to amino acids 231-451 of human Gamma-Tubulin (P23258).
Immunogen Sequence	LVSTIMSASTTTLRYPGYMN NDLIGLIASLIPTPLRHFLM TGYTPLTTDQSVASVRKTTV LDVMRRLQPKNVMVSTGRD RQTNHCYIALNIIQGEVDP TQVHKSLQRIRERKLANFIP WGPASIQVALSRKSPYLPSPA HRVSGLMMANHTSISSLFER TCRQYDKLRKREAFLEQFRK EDMFKDNFDEMDTSREIVQQ LIDEYHAATRPDIYSWGTQE Q



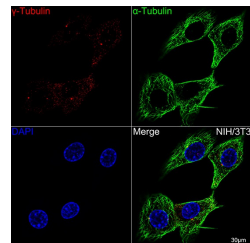
Western blot analysis of extracts of various cell lines, using Gamma-Tubulin rabbit monoclonal antibody (STJ11102519) at 1:1000 dilution. Secondary antibody: HRP Goat Anti-rabbit IgG (H+L) at 1:10000 dilution. Lysates/proteins: 25ug per lane. Blocking buffer: 3% non-fat dry milk in TBST. Detection: ECL Basic Kit. Exposure time: 3s.



Confocal imaging of U-2OS cells using Gamma-TubulinA Rabbit monoclonal antibody (STJ11102519, dilution 1:100) (Green). The cells were counterstained with Alpha-tubulin (ubiquitous) chain Rabbit monoclonal antibody (dilution 1:100) (Red). DAPI was used for nuclear staining (blue). Objective: 60x.



Immunohistochemistry of paraffin-embedded rat testis using Gamma-Tubulin rabbit monoclonal antibody (STJ11102519) at dilution of 1:100 (40x lens).



Confocal imaging of NIH-3T3 cells using Gamma-TubulinA Rabbit monoclonal antibody (STJ11102519, dilution 1:100) (Red). The cells were counterstained with Alpha-tubulin (ubiquitous) chain Rabbit monoclonal antibody (dilution 1:100) (Green). DAPI was used for nuclear staining (blue). Objective: 60x.

This product is suitable for in-vitro studies under the RESEARCH USE ONLY [RUO] licence. This product must not be used as for diagnostic or other medical purposes.
St John's Laboratory Ltd, Knowledge Dock Business Centre, University Way, London, E16 2RD | Tel: 0208 223 3081