

**Anti-CRYAB antibody (76-175) [S1MR] (STJ11102511)**  
STJ11102511

**GENERAL INFORMATION**

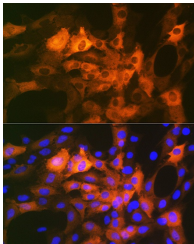
<b>Product Type</b>	Primary antibodies
<b>Short Description</b>	
<b>Applications</b>	WB/IHC-P/IF/ICC/ELISA
<b>Host/Source</b>	Rabbit
<b>Reactivity</b>	Rat

**PRODUCT PROPERTIES**

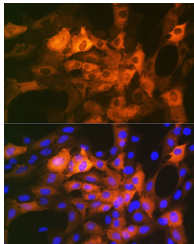
<b>Clonality</b>	Monoclonal
<b>Clone ID</b>	S1MR
<b>Concentration</b>	Lot specific
<b>Conjugation</b>	Unconjugated
<b>Purification</b>	Affinity purification
<b>Dilution Range</b>	WB:1:500-1:1000 IHC-P:1:50-1:200 IF/ICC:1:50-1:200 ELISA:Recommended starting concentration is 1 µg/mL. Please optimize the concentration based on your specific assay requirements.
<b>Formulation</b>	PBS with 0.02% Sodium Azide, 0.05% BSA, 50% Glycerol, pH 7.3.
<b>Isotype</b>	IgG
<b>Storage Instruction</b>	Store at -20°C for up to 1 year from the date of receipt, and avoid repeat freeze-thaw cycles.

**TARGET INFORMATION**

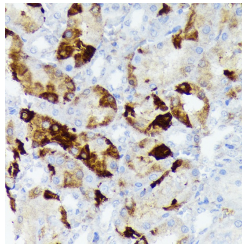
<b>Gene ID</b>	1410
<b>Gene Symbol</b>	CRYAB
<b>Uniprot ID</b>	CRYAB_HUMAN
<b>Immunogen</b>	
<b>Immunogen Region</b>	76-175
<b>Specificity</b>	A synthetic peptide corresponding to a sequence within amino acids 76-175 of human CRYAB (P02511).
<b>Immunogen Sequence</b>	SVNLDVKHFSPEELKVKVLG DVIEVHGKHEERQDEHGFIS REFHRKYRIPADVPLTITS SLSSDGLTVNGPRKQVSGP ERTIPITREEKPAVTAAPKK



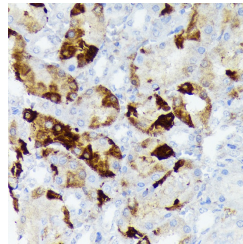
Western blot analysis of extracts of various cell lines, using CRYAB rabbit monoclonal antibody (STJ11102511) at 1:1000 dilution. Secondary antibody: HRP Goat Anti-rabbit IgG (H+L) at 1:10000 dilution. Lysates/proteins: 25µg per lane. Blocking buffer: 3% non-fat dry milk in TBST. Detection: ECL Basic Kit. Exposure time: 30s.



Immunofluorescence analysis of C6 cells using CRYAB Rabbit monoclonal antibody (STJ11102511) at dilution of 1:100 (40x lens). Blue: DAPI for nuclear staining.



Immunohistochemistry of paraffin-embedded rat kidney using CRYAB rabbit monoclonal antibody (STJ11102511) at dilution of 1:100 (40x lens). Perform microwave antigen retrieval with 10 mM Tris/EDTA buffer pH 9.0 before commencing with immunohistochemistry staining protocol.



Immunohistochemistry analysis of paraffin-embedded rat kidney using CRYAB Rabbit monoclonal antibody (STJ11102511) at dilution of 1:100 (40x lens). Perform microwave antigen retrieval with 10 mM Tris/EDTA buffer pH 9.0 before commencing with immunohistochemistry staining protocol.