

Anti-CASP14 antibody (100-200) [S7MR] (STJ11102507)
STJ11102507

GENERAL INFORMATION

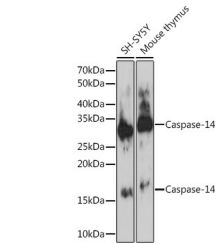
Product Type	Primary antibodies
Short Description	
Applications	WB/ELISA
Host/Source	Rabbit
Reactivity	Human/Mouse/Rat

PRODUCT PROPERTIES

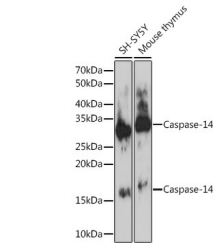
Clonality	Monoclonal
Clone ID	S7MR
Concentration	Lot specific
Conjugation	Unconjugated
Purification	Affinity purification
Dilution Range	WB:1:500-1:1000 ELISA:Recommended starting concentration is 1 Mu g/mL. Please optimize the concentration based on your specific assay requirements.
Formulation	PBS with 0.02% Sodium Azide, 0.05% BSA, 50% Glycerol, pH 7.3.
Isotype	IgG
Storage Instruction	Store at -20°C for up to 1 year from the date of receipt, and avoid repeat freeze-thaw cycles.

TARGET INFORMATION

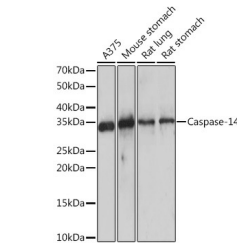
Gene ID	23581
Gene Symbol	CASP14
Uniprot ID	CASPE_HUMAN
Immunogen	
Immunogen Region	100-200
Specificity	Recombinant fusion protein containing a sequence corresponding to amino acids 100-200 of human Caspase-14 (P31944).
Immunogen Sequence	GEMVKLENLFEALNNKNCQA LRAKPKVYIIQACRGEQRDP GETVGGDEIMVMIKDSPQTI PTYTDALHVYSTVEGYIAYR HDQKGSCFIQTLVDVFTKRK G



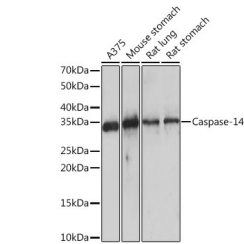
Western blot analysis of extracts of various cell lines, using Caspase-14 rabbit monoclonal antibody (STJ11102507) at 1:1000 dilution. Secondary antibody: HRP Goat Anti-rabbit IgG (H+L) at 1:10000 dilution. Lysates/proteins: 25ug per lane. Blocking buffer: 3% non-fat dry milk in TBST. Detection: ECL Enhanced Kit. Exposure time: 10s.



Western blot analysis of extracts of various cell lines, using Caspase-14 Rabbit monoclonal antibody (STJ11102507) at 1:1000 dilution. Secondary antibody: HRP Goat Anti-Rabbit IgG (H+L) (STJSD00856) at 1:10000 dilution. Lysates/proteins: 25 Mu g per lane. Blocking buffer: 3% nonfat dry milk in TBST. Detection: ECL Enhanced Kit. Exposure time: 30s.



Western blot analysis of extracts of various cell lines, using Caspase-14 rabbit monoclonal antibody (STJ11102507) at 1:1000 dilution. Secondary antibody: HRP Goat Anti-rabbit IgG (H+L) at 1:10000 dilution. Lysates/proteins: 25ug per lane. Blocking buffer: 3% non-fat dry milk in TBST. Detection: ECL Enhanced Kit. Exposure time: 30s.



Western blot analysis of extracts of various cell lines, using Caspase-14 Rabbit monoclonal antibody (STJ11102507) at 1:1000 dilution. Secondary antibody: HRP Goat Anti-Rabbit IgG (H+L) (STJSD00856) at 1:10000 dilution. Lysates/proteins: 25 Mu g per lane. Blocking buffer: 3% nonfat dry milk in TBST. Detection: ECL Enhanced Kit. Exposure time: 10s.

This product is suitable for in-vitro studies under the RESEARCH USE ONLY [RUO] licence. This product must not be used as for diagnostic or other medical purposes.
St John's Laboratory Ltd, Knowledge Dock Business Centre, University Way, London, E16 2RD | Tel: 0208 223 3081