

Anti-RPE65 antibody (400-500) [S6MR] (STJ11102506)
STJ11102506

GENERAL INFORMATION

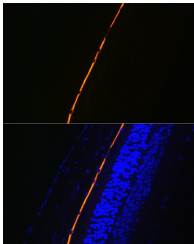
Product Type	Primary antibodies
Short Description	
Applications	WB/IHC-P/IF/ICC/ELISA
Host/Source	Rabbit
Reactivity	Mouse/Rat

PRODUCT PROPERTIES

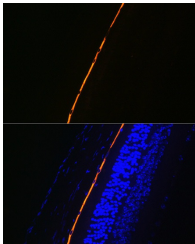
Clonality	Monoclonal
Clone ID	S6MR
Concentration	Lot specific
Conjugation	Unconjugated
Purification	Affinity purification
Dilution Range	WB:1:500-1:1000 IHC-P:1:100-1:1000 IF/ICC:1:100-1:1000 ELISA:Recommended starting concentration is 1 Mu g/mL. Please optimize the concentration based on your specific assay requirements.
Formulation	PBS with 0.02% Sodium Azide, 0.05% BSA, 50% Glycerol, pH 7.3.
Isotype	IgG
Storage Instruction	Store at -20°C for up to 1 year from the date of receipt, and avoid repeat freeze-thaw cycles.

TARGET INFORMATION

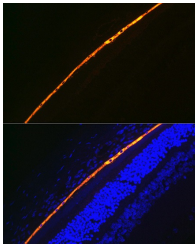
Gene ID	6121
Gene Symbol	RPE65
Uniprot ID	RPE65_HUMAN
Immunogen	
Immunogen Region	400-500
Specificity	A synthetic peptide corresponding to a sequence within amino acids 400-500 of human RPE65 (Q16518).
Immunogen Sequence	TIWLEPEVLFSGPRQAFEP QINYQKYCGKPYTYAYGLGL NHFVPDRCLKLVKTKETWV WQEPDSYPSEPIFVSHPDAL EEDDGVLSVVSPGAGQKP A



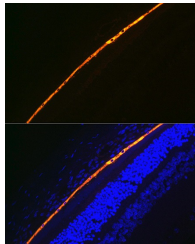
Western blot analysis of extracts of Rat eye, using RPE65 rabbit monoclonal antibody (STJ11102506) at 1:1000 dilution. Secondary antibody: HRP Goat Anti-rabbit IgG (H+L) at 1:10000 dilution. Lysates/proteins: 25ug per lane. Blocking buffer: 3% non-fat dry milk in TBST. Detection: ECL Basic Kit. Exposure time: 3min.



Immunofluorescence analysis of mouse eye using RPE65 Rabbit monoclonal antibody (STJ11102506) at dilution of 1:100 (40x lens). Blue: DAPI for nuclear staining.



Immunohistochemistry of paraffin-embedded rat retina using RPE65 rabbit monoclonal antibody (STJ11102506) at dilution of 1:100 (40x lens). Perform microwave antigen retrieval with 10 mM Tris/EDTA buffer pH 8.0 before commencing with immunohistochemistry staining protocol.



Immunofluorescence analysis of rat eye using RPE65 Rabbit monoclonal antibody (STJ11102506) at dilution of 1:100 (40x lens). Blue: DAPI for nuclear staining.

This product is suitable for in-vitro studies under the RESEARCH USE ONLY [RUO] licence. This product must not be used as for diagnostic or other medical purposes.
St John's Laboratory Ltd, Knowledge Dock Business Centre, University Way, London, E16 2RD | Tel: 0208 223 3081