

Anti-RNF40 antibody (231-431) [S0MR] (STJ11102500)
STJ11102500

GENERAL INFORMATION

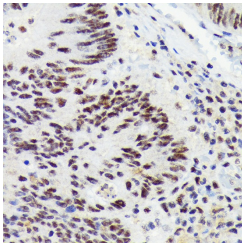
Product Type	Primary antibodies
Short Description	
Applications	WB/IHC-P/ELISA
Host/Source	Rabbit
Reactivity	Human/Mouse

PRODUCT PROPERTIES

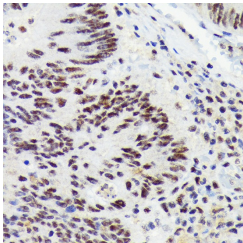
Clonality	Monoclonal
Clone ID	S0MR
Concentration	Lot specific
Conjugation	Unconjugated
Purification	Affinity purification
Dilution	WB:1:500-1:2000
Range	IHC-P:1:50-1:200
	ELISA:Recommended starting concentration is 1 Mu g/mL. Please optimize the concentration based on your specific assay requirements.
Formulation	PBS with 0.02% Sodium Azide, 0.05% BSA, 50% Glycerol, pH 7.3.
Isotype	IgG
Storage Instruction	Store at -20°C for up to 1 year from the date of receipt, and avoid repeat freeze-thaw cycles.

TARGET INFORMATION

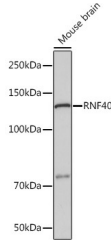
Gene ID	9810
Gene Symbol	RNF40
Uniprot ID	BRE1B_HUMAN
Immunogen	
Immunogen Region	231-431
Specificity	Recombinant fusion protein containing a sequence corresponding to amino acids 231-431 of human RNF40 (O75150).
Immunogen Sequence	RELGRENNRLQDLATQLQEK HHRISLEYSELQDKVTS AET KVLEMETTVEDLQWDIEKLR KREQKLNKHLAEALEQLNSG YYVSGSSSGFQGGQITLSMQ KFEMLNAELEENQELANSRM AELEKLQAEALQGAVRTNERL KVALRSLPEEVVRETGEYRM LQAQFSLLYNESLQVKTKQLD EARGLLLATKNSHLRHIEHM E



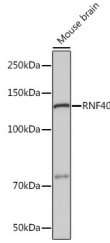
Immunohistochemistry analysis of paraffin-embedded human colon carcinoma using RNF40 Rabbit monoclonal antibody (STJ11102500) at dilution of 1:100 (40x lens). Perform microwave antigen retrieval with 10 mM Tris/EDTA buffer pH 9.0 before commencing with immunohistochemistry staining protocol.



Western blot analysis of extracts of various cell lines using RNF40 rabbit monoclonal antibody (STJ11102500) at 1:1000 dilution. Secondary antibody: HRP Goat Anti-Rabbit IgG (H+L) at 1:10000 dilution. Lysates/proteins: 25ug per lane. Blocking buffer: 3% non-fat dry milk in TBST. Detection: ECL Basic Kit. Exposure time: 3s.



Western blot analysis of extracts of mouse brain using RNF40 rabbit monoclonal antibody (STJ11102500) at 1:1000 dilution. Secondary antibody: HRP Goat Anti-Rabbit IgG (H+L) at 1:10000 dilution. Lysates/proteins: 25ug per lane. Blocking buffer: 3% non-fat dry milk in TBST. Detection: ECL Basic Kit. Exposure time: 30s.



Western blot analysis of extracts of mouse brain using RNF40 Rabbit monoclonal antibody (STJ11102500) at 1:1000 dilution. Secondary antibody: HRP Goat Anti-Rabbit IgG (H+L) (STJS000656) at 1:10000 dilution. Lysates/proteins: 25 Mu g per lane. Blocking buffer: 3% nonfat dry milk in TBST. Detection: ECL Basic Kit. Exposure time: 30s.

This product is suitable for in-vitro studies under the RESEARCH USE ONLY [RUO] licence. This product must not be used as for diagnostic or other medical purposes.
St John's Laboratory Ltd, Knowledge Dock Business Centre, University Way, London, E16 2RD | Tel: 0208 223 3081