

Anti-ST13 antibody (270-369) [S6MR] (STJ11102496)
STJ11102496

GENERAL INFORMATION

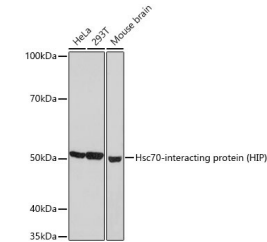
Product Type	Primary antibodies
Short Description	
Applications	WB/ELISA
Host/Source	Rabbit
Reactivity	Human/Mouse

PRODUCT PROPERTIES

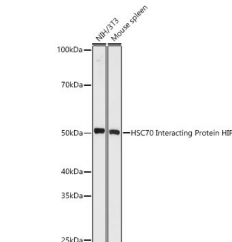
Clonality	Monoclonal
Clone ID	S6MR
Concentration	Lot specific
Conjugation	Unconjugated
Purification	Affinity purification
Dilution	WB:1:500-1:1000
Range	ELISA:Recommended starting concentration is 1 Mu g/mL. Please optimize the concentration based on your specific assay requirements.
Formulation	PBS with 0.02% Sodium Azide, 0.05% BSA, 50% Glycerol, pH 7.3.
Isotype	IgG
Storage	Store at -20°C for up to 1 year from the date of receipt, and avoid repeat freeze-thaw cycles.
Instruction	

TARGET INFORMATION

Gene ID	6767
Gene Symbol	ST13
Uniprot ID	F10A1_HUMAN
Immunogen	
Immunogen Region	270-369
Specificity	A synthetic peptide corresponding to a sequence within amino acids 270-369 of human Hsc70-interacting protein (HIP) (P50502). MDPRKVNELRAFKMCKQDP SVLHTEEMRFLREWVESMGG KVPPATQKAKSEENTKEEK DSKKVEEDLKADEPSSEESD
Immunogen Sequence	LEIDKEGVIEPDTDAPQEMG DENAEITEEMMDQANDKKVA AIEALNDGELQKAIDLFTDA IKLNPRILAILYAKRASVFK LQKPNAAIRDCDRAIEINPD SAQPYKWRGKAHRLLGHWEE AAHDLALACKLDYDEDASAM LKEVQPRAQKIAEHRRKYE



Western blot analysis of extracts of various cell lines, using Hsc70-interacting protein (HIP) rabbit monoclonal antibody (STJ11102496) at 1:1000 dilution. Secondary antibody: HRP Goat Anti-rabbit IgG (H+L) (STJS000856) at 1:10000 dilution. Lysates/proteins: 25 µg per lane. Blocking buffer: 3% non-fat dry milk in TBST. Detection: ECL Basic Kit. Exposure time: 30s.



Western blot analysis of various lysates, using Hsc70-interacting protein (HIP) rabbit monoclonal antibody (STJ11102496) at 1:1000 dilution. Secondary antibody: HRP Goat Anti-rabbit IgG (H+L) (STJS000856) at 1:10000 dilution. Lysates/proteins: 25 µg per lane. Blocking buffer: 3% non-fat dry milk in TBST. Detection: ECL Basic Kit. Exposure time: 180s.

This product is suitable for in-vitro studies under the RESEARCH USE ONLY [RUO] licence. This product must not be used as for diagnostic or other medical purposes.
St John's Laboratory Ltd, Knowledge Dock Business Centre, University Way, London, E16 2RD | Tel: 0208 223 3081