

Anti-CD7 antibody (141-240) [S1MR] (STJ11102491)

STJ11102491

GENERAL INFORMATION

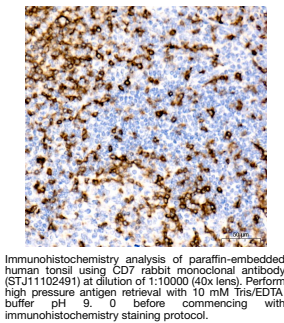
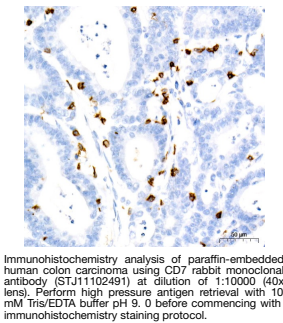
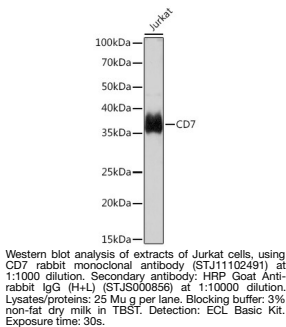
Product Type	Primary antibodies
Short Description	
Applications	WB/IHC-P/ELISA
Host/Source	Rabbit
Reactivity	Human

PRODUCT PROPERTIES

Clonality	Monoclonal
Clone ID	S1MR
Concentration	Lot specific
Conjugation	Unconjugated
Purification	Affinity purification
Dilution Range	WB:1:500-1:1000 IHC-P:1:2000-1:10000 ELISA:Recommended starting concentration is 1 Mu g/mL. Please optimize the concentration based on your specific assay requirements.
Formulation	PBS with 0.02% Sodium Azide, 0.05% BSA, 50% Glycerol, pH 7.3.
Isotype	IgG
Storage Instruction	Store at -20°C for up to 1 year from the date of receipt, and avoid repeat freeze-thaw cycles.

TARGET INFORMATION

Gene ID	924
Gene Symbol	CD7
Uniprot ID	CD7_HUMAN
Immunogen	
Region	141-240
Specificity	A synthetic peptide corresponding to a sequence within amino acids 141-240 of human CD7 (P09564).
Immunogen Sequence	RCSDAPPRASALPAPPTGSA LPDPQTASALPDPPAASALP AALAVISFLLGLGLGVACVL ARTQIKKLCSWRDKNSAACV VYEDMSHSRCNTLSSPNQYQ



This product is suitable for in-vitro studies under the RESEARCH USE ONLY [RUO] licence. This product must not be used as for diagnostic or other medical purposes.
St John's Laboratory Ltd, Knowledge Dock Business Centre, University Way, London, E16 2RD | Tel: 0208 223 3081