

Anti-CTTN antibody (1-100) [S9MR] (STJ11102479)

STJ11102479

GENERAL INFORMATION

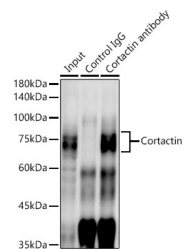
Product Type	Primary antibodies
Short Description	
Applications	WB/IHC-P/IF/ICC/IP/ELISA
Host/Source	Rabbit
Reactivity	Human/Mouse/Rat

PRODUCT PROPERTIES

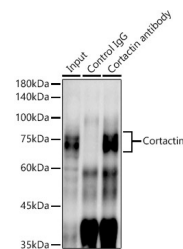
Clonality	Monoclonal
Clone ID	S9MR
Concentration	Lot specific
Conjugation	Unconjugated
Purification	Affinity purification
Dilution Range	WB:1:1000-1:6000 IHC-P:1:200-1:800 IF/ICC:1:200-1:800 IP:0.5 Mu g-4 Mu g antibody for 400 Mu g-600 Mu g extracts of whole cells ELISA:Recommended starting concentration is 1 Mu g/mL. Please optimize the concentration based on your spe
Formulation	PBS with 0.02% Sodium Azide, 0.05% BSA, 50% Glycerol, pH 7.3.
Isotype	IgG
Storage Instruction	Store at -20°C for up to 1 year from the date of receipt, and avoid repeat freeze-thaw cycles.

TARGET INFORMATION

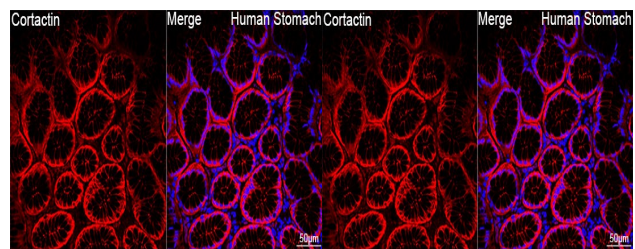
Gene ID	2017
Gene Symbol	CTTN
Uniprot ID	SRC8_HUMAN
Immunogen	
Immunogen Region	1-100
Specificity	A synthetic peptide corresponding to a sequence within amino acids 1-100 of human Cortactin (Q14247).
Immunogen Sequence	MWKASAGHAVSIAQDDAGAD DWETDPDFVNDVSEKEQRWG AKTVQSGSGHQEHINIKLRE NVFQEHQTLKEKELETGPKA SHGYGGKFGVEQDRMDKSAV



Western blot analysis of extracts of various cell lines, using Cortactin rabbit monoclonal antibody (STJ11102479) at 1:1000 dilution. Secondary antibody: HRP-Goat Anti-rabbit IgG (H+L) at 1:10000 dilution. Lysates/proteins: 25ug per lane. Blocking buffer: 3% non-fat dry milk in TBST. Detection: ECL Basic Kit. Exposure time: 3s.



Immunoprecipitation analysis of 600 Mu g extracts of Mouse lung cells using 3 Mu g Cortactin antibody (STJ11102479). Western blot was performed from the immunoprecipitate using Cortactin antibody (STJ11102479) at a dilution of 1:1000.



Immunohistochemistry of paraffin-embedded rat testis using Cortactin rabbit monoclonal antibody (STJ11102479) at dilution of 1:100 (40x lens). Perform microwave antigen retrieval with 10 mM Tris/EDTA buffer pH 8.0 before commencing with immunohistochemistry staining protocol.

Confocal imaging of a paraffin-embedded Human stomach tissue using Cortactin Rabbit monoclonal antibody (STJ11102479, dilution 1:200) followed by a further incubation with Cy3 Goat Anti-Rabbit IgG (H+L) (dilution 1:500) (Red). DAPI was used for nuclear staining (Blue). Objective: 40x. Perform high pressure antigen retrieval with 0.01 M citrate buffer (pH 6.0) prior to IF staining.

This product is suitable for in-vitro studies under the RESEARCH USE ONLY [RUO] licence. This product must not be used as for diagnostic or other medical purposes.

St John's Laboratory Ltd, Knowledge Dock Business Centre, University Way, London, E16 2RD | Tel: 0208 223 3081