

Anti-STXBP1 antibody (400-500) [S6MR] (STJ11102476)

STJ11102476

GENERAL INFORMATION

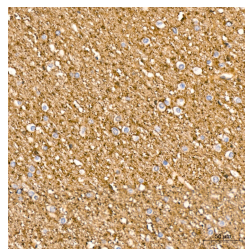
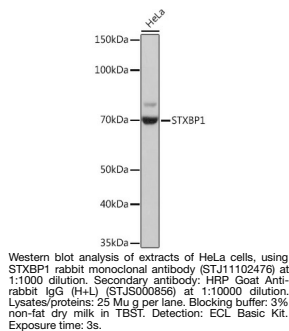
Product Type	Primary antibodies
Short Description	
Applications	WB/IHC-P/ELISA
Host/Source	Rabbit
Reactivity	Human/Mouse/Rat

PRODUCT PROPERTIES

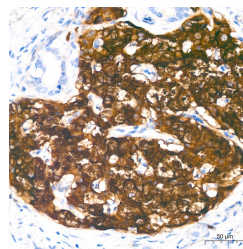
Clonality	Monoclonal
Clone ID	S6MR
Concentration	Lot specific
Conjugation	Unconjugated
Purification	Affinity purification
Dilution Range	WB:1:500-1:1000 IHC-P:1:50-1:200 ELISA:Recommended starting concentration is 1 µg/mL. Please optimize the concentration based on your specific assay requirements.
Formulation	PBS with 0.02% Sodium Azide, 0.05% BSA, 50% Glycerol, pH 7.3.
Isotype	IgG
Storage Instruction	Store at -20°C for up to 1 year from the date of receipt, and avoid repeat freeze-thaw cycles.

TARGET INFORMATION

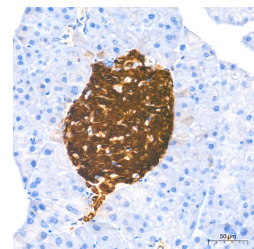
Gene ID	6812
Gene Symbol	STXBP1
Uniprot ID	STXB1_HUMAN
Immunogen	
Immunogen Region	400-500
Specificity	A synthetic peptide corresponding to a sequence within amino acids 400-500 of human STXBP1 (P61764). STYDKIRIILLYIFLKNGIT EENLNKLIQHAQIPPEDSEI ITNMAHLGVPIVDTSLRRR SKPERKERISEQTYQLSRWT
Immunogen Sequence	PIIKDIMEDTIEDKLDTKHY P



Immunohistochemistry analysis of STXBP1 in paraffin-embedded human brain tissue using STXBP1 rabbit monoclonal antibody (STJ11102476) at a dilution of 1:200 (40x lens). High pressure antigen retrieval was performed with 0.01 M citrate buffer (pH 6.0) prior to immunohistochemistry staining.



Immunohistochemistry analysis of STXBP1 in paraffin-embedded human pancreas tissue using STXBP1 rabbit monoclonal antibody (STJ11102476) at a dilution of 1:200 (40x lens). High pressure antigen retrieval was performed with 0.01 M citrate buffer (pH 6.0) prior to immunohistochemistry staining.



Immunohistochemistry analysis of STXBP1 in paraffin-embedded mouse pancreas tissue using STXBP1 rabbit monoclonal antibody (STJ11102476) at a dilution of 1:200 (40x lens). High pressure antigen retrieval was performed with 0.01 M citrate buffer (pH 6.0) prior to immunohistochemistry staining.

This product is suitable for in-vitro studies under the RESEARCH USE ONLY [RUO] licence. This product must not be used as for diagnostic or other medical purposes.
St John's Laboratory Ltd, Knowledge Dock Business Centre, University Way, London, E16 2RD | Tel: 0208 223 3081