

Anti-CCNE2 antibody (50-150) [S4MR] (STJ11102474)

STJ11102474

GENERAL INFORMATION

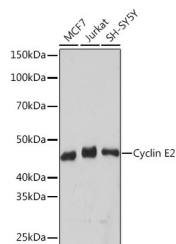
Product Type	Primary antibodies
Short Description	
Applications	WB/ELISA
Host/Source	Rabbit
Reactivity	Human

PRODUCT PROPERTIES

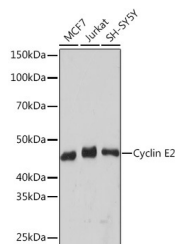
Clonality	Monoclonal
Clone ID	S4MR
Concentration	Lot specific
Conjugation	Unconjugated
Purification	Affinity purification
Dilution Range	WB:1:100-1:500 ELISA:Recommended starting concentration is 1 Mu g/mL. Please optimize the concentration based on your specific assay requirements.
Formulation	PBS with 0.02% Sodium Azide, 0.05% BSA, 50% Glycerol, pH 7.3.
Isotype	IgG
Storage Instruction	Store at -20°C for up to 1 year from the date of receipt, and avoid repeat freeze-thaw cycles.

TARGET INFORMATION

Gene ID	9134
Gene Symbol	CCNE2
Uniprot ID	CCNE2_HUMAN
Immunogen	
Immunogen	50-150
Region	
Specificity	A synthetic peptide corresponding to a sequence within amino acids 50-150 of human Cyclin E2 (O96020).
Immunogen	HQYEIRNCWPPVLGGISPC IIETPHKEIGTSDFSRFTN YRFKNLFINPSPLPDLSWGC SKEVWLNMLKKESRYVHDKH
Sequence	FEVLHSDLEPQMRISLLDWL L



Western blot analysis of extracts of various cell lines, using Cyclin E2 rabbit monoclonal antibody (STJ11102474) at 1:500 dilution. Secondary antibody: HRP Goat Anti-rabbit IgG (H+L) at 1:10000 dilution. Lysates/proteins: 25ug per lane. Blocking buffer: 3% non-fat dry milk in TBST. Detection: ECL Basic Kit. Exposure time: 3min.



Western blot analysis of extracts of various cell lines, using Cyclin E2 Rabbit monoclonal antibody (STJ11102474) at 1:500 dilution. Secondary antibody: HRP Goat Anti-Rabbit IgG (H+L) (STJ1000896) at 1:10000 dilution. Lysates/proteins: 25 Mu g per lane. Blocking buffer: 3% nonfat dry milk in TBST. Detection: ECL Basic Kit. Exposure time: 3min.

This product is suitable for in-vitro studies under the RESEARCH USE ONLY [RUO] licence. This product must not be used as for diagnostic or other medical purposes.
St John's Laboratory Ltd, Knowledge Dock Business Centre, University Way, London, E16 2RD | Tel: 0208 223 3081