

Anti-CD82 antibody (168-267) [S6MR] (STJ11102466)
STJ11102466

GENERAL INFORMATION

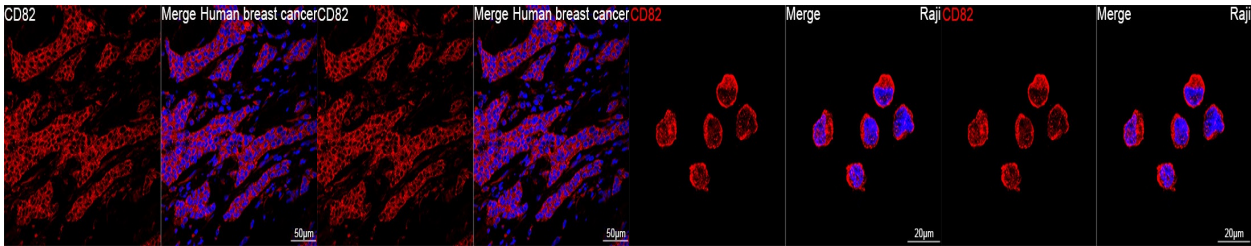
Product Type	Primary antibodies
Short Description	
Applications	WB/IHC-P/IF/ICC/ELISA
Host/Source	Rabbit
Reactivity	Human/Mouse

PRODUCT PROPERTIES

Clonality	Monoclonal
Clone ID	S6MR
Concentration	Lot specific
Conjugation	Unconjugated
Purification	Affinity purification
Dilution Range	WB:1:1000-1:6000 IHC-P:1:100-1:500 IF/ICC:1:200-1:2000 ELISA:Recommended starting concentration is 1 Mu g/mL. Please optimize the concentration based on your specific assay requirements.
Formulation	PBS with 0.02% Sodium Azide, 0.05% BSA, 50% Glycerol, pH 7.3.
Isotype	IgG
Storage Instruction	Store at -20°C for up to 1 year from the date of receipt, and avoid repeat freeze-thaw cycles.

TARGET INFORMATION

Gene ID	3732
Gene Symbol	CD82
Uniprot ID	CD82_HUMAN
Immunogen	
Immunogen	168-267
Region	
Specificity	A synthetic peptide corresponding to a sequence within amino acids 168-267 of human CD82 (P27701).
Immunogen	PEVTYPCSCVEVKGEEDNSLS VRKGFCEAPGNRTQSGNHPE DWPVYQEGCMEKVQAWLQEN LGIILGVGVGVAIIELLGMV
Sequence	LSICLCRHVHSEDYSKVPKY



Western blot analysis of extracts of various cell lines, using CD82 rabbit monoclonal antibody (STJ11102466) at 1:1000 dilution. Secondary antibody: HRP Goat Anti-rabbit IgG (H+L) at 1:10000 dilution. Lysates/proteins: 25ug per lane. Blocking buffer: 3% non-fat dry milk in TBST. Detection: ECL Basic Kit. Exposure time: 10s.

Confocal imaging of a paraffin-embedded Human breast cancer using a CD82 Rabbit monoclonal antibody (STJ11102466, dilution 1:200) followed by a further incubation with Cy3 Goat Anti-Rabbit IgG (H+L) (dilution 1:500) (Red). DAPI was used for nuclear staining (Blue). Objective: 40x. Perform high pressure antigen retrieval with 0.01 M citrate buffer (pH 6.0) prior to IF staining.

Immunohistochemistry of paraffin-embedded human colon using CD82 rabbit monoclonal antibody (STJ11102466) at dilution of 1:100 (40x lens).

Confocal imaging of Raji cells using a CD82 Rabbit monoclonal antibody (STJ11102466, dilution 1:200) followed by a further incubation with Cy3 Goat Anti-Rabbit IgG (H+L) (dilution 1:500) (Red). DAPI was used for nuclear staining (Blue). Objective: 100x.

This product is suitable for in-vitro studies under the RESEARCH USE ONLY [RUO] licence. This product must not be used as for diagnostic or other medical purposes.
St John's Laboratory Ltd, Knowledge Dock Business Centre, University Way, London, E16 2RD | Tel: 0208 223 3081