

Anti-UBE2N antibody (1-100) [S3MR] (STJ11102463)
STJ11102463

GENERAL INFORMATION

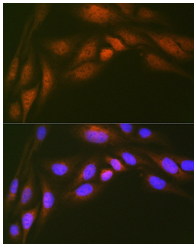
Product Type	Primary antibodies
Short Description	
Applications	WB/IHC-P/IF/ICC/ELISA
Host/Source	Rabbit
Reactivity	Human/Mouse/Rat

PRODUCT PROPERTIES

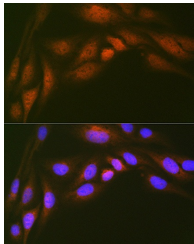
Clonality	Monoclonal
Clone ID	S3MR
Concentration	Lot specific
Conjugation	Unconjugated
Purification	Affinity purification
Dilution Range	WB:1:500-1:1000 IHC-P:1:50-1:200 IF/ICC:1:50-1:200 ELISA:Recommended starting concentration is 1 μ g/mL. Please optimize the concentration based on your specific assay requirements.
Formulation	PBS with 0.02% Sodium Azide, 0.05% BSA, 50% Glycerol, pH 7.3.
Isotype	IgG
Storage Instruction	Store at -20°C for up to 1 year from the date of receipt, and avoid repeat freeze-thaw cycles.

TARGET INFORMATION

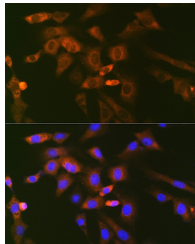
Gene ID	7334
Gene Symbol	UBE2N
Uniprot ID	UBE2N_HUMAN
Immunogen	
Immunogen Region	1-100
Specificity	A synthetic peptide corresponding to a sequence within amino acids 1-100 of human Ube2N/Ubc13 (P61088).
Immunogen Sequence	MAGLPRIIKETQRLLAEPV PGIAEPDESNAFYFHVIA GPQDSPFEGGTFKLELFLPE EYPMAAPKVRFMTKIYHPNV DKLGRICLDILKDKWSPALQ



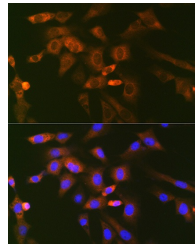
Western blot analysis of extracts of various cell lines, using Ube2N/Ubc13 rabbit monoclonal antibody (STJ11102463) at 1:1000 dilution. Secondary antibody: HRP Goat Anti-rabbit IgG (H+L) at 1:10000 dilution. Lysates/proteins: 25ug per lane. Blocking buffer: 3% non-fat dry milk in TBST. Detection: ECL Basic Kit. Exposure time: 30s.



Immunofluorescence analysis of U-2 OS cells using Ube2N/Ubc13 Rabbit monoclonal antibody (STJ11102463) at dilution of 1:100 (40x lens). Blue: DAPI for nuclear staining.



Immunohistochemistry of paraffin-embedded human lung cancer using Ube2N/Ubc13 rabbit monoclonal antibody (STJ11102463) at dilution of 1:100 (40x lens).



Immunofluorescence analysis of NIH/3T3 cells using Ube2N/Ubc13 Rabbit monoclonal antibody (STJ11102463) at dilution of 1:100 (40x lens). Blue: DAPI for nuclear staining.