

Anti-MCM4 antibody (764-863) [S1MR] (STJ11102461)

STJ11102461

GENERAL INFORMATION

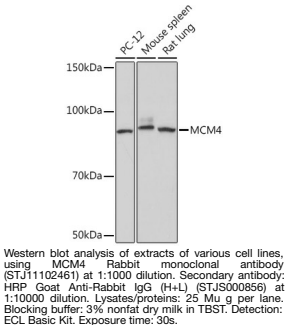
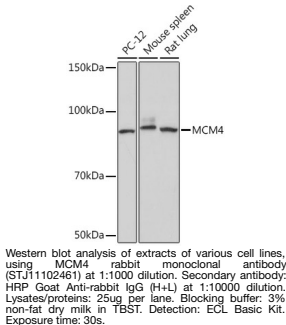
| | |
|--------------------------|--------------------|
| Product Type | Primary antibodies |
| Short Description | |
| Applications | WB/ELISA |
| Host/Source | Rabbit |
| Reactivity | Human/Mouse/Rat |

PRODUCT PROPERTIES

| | |
|----------------------------|---|
| Clonality | Monoclonal |
| Clone ID | S1MR |
| Concentration | Lot specific |
| Conjugation | Unconjugated |
| Purification | Affinity purification |
| Dilution Range | WB:1:500-1:2000 ELISA:Recommended starting concentration is 1 μ g/mL. Please optimize the concentration based on your specific assay requirements. |
| Formulation | PBS with 0.02% Sodium Azide, 0.05% BSA, 50% Glycerol, pH 7.3. |
| Isotype | IgG |
| Storage Instruction | Store at -20°C for up to 1 year from the date of receipt, and avoid repeat freeze-thaw cycles. |

TARGET INFORMATION

| | |
|---------------------------|--|
| Gene ID | 4173 |
| Gene Symbol | MCM4 |
| Uniprot ID | MCM4_HUMAN |
| Immunogen | |
| Immunogen Region | 764-863 |
| Specificity | A synthetic peptide corresponding to a sequence within amino acids 764-863 of human MCM4 (P33991). |
| Immunogen Sequence | LHREALKQSATDPRTGIVDI SILTTGMSATSRKRKEELAE ALKKLILSKGKTPALKYQQL FEDIRGQSDIAITKDMFEELRALADDDFLVTGKTVRL |



This product is suitable for in-vitro studies under the RESEARCH USE ONLY [RUO] licence. This product must not be used as for diagnostic or other medical purposes.
St John's Laboratory Ltd, Knowledge Dock Business Centre, University Way, London, E16 2RD | Tel: 0208 223 3081