

Anti-PIM2 antibody (10-120) [S8MR] (STJ11102458)

STJ11102458

GENERAL INFORMATION

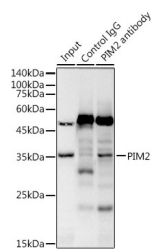
Product Type	Primary antibodies
Short Description	
Applications	WB/IP/ELISA
Host/Source	Rabbit
Reactivity	Human/Mouse/Rat

PRODUCT PROPERTIES

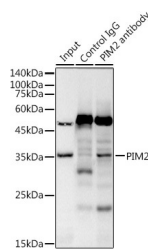
Clonality	Monoclonal
Clone ID	S8MR
Concentration	Lot specific
Conjugation	Unconjugated
Purification	Affinity purification
Dilution Range	WB:1:500-1:1000 IP:0.5 Mu g-4 Mu g antibody for 200 Mu g-400 Mu g extracts of whole cells ELISA:Recommended starting concentration is 1 Mu g/mL. Please optimize the concentration based on your specific assay requirements.
Formulation	PBS with 0.02% Sodium Azide, 0.05% BSA, 50% Glycerol, pH 7.3.
Isotype	IgG
Storage Instruction	Store at -20°C for up to 1 year from the date of receipt, and avoid repeat freeze-thaw cycles.

TARGET INFORMATION

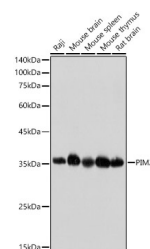
Gene ID	11040
Gene Symbol	PIM2
Uniprot ID	PIM2_HUMAN
Immunogen	
Immunogen Region	10-120
Specificity	Recombinant fusion protein containing a sequence corresponding to amino acids 10-120 of human PIM2 (NP_006866.2).
Immunogen Sequence	PAPPGTPTPPPGGKDREAFE AEYRLGPLLGKGGFVTFAG HRLDRLQVAIKVIPRNRVL GWSPLSDSVTCPLEVALLWK VGAGGHPGVIRLLDFWETQ EGFMLVLERPL



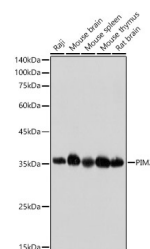
Western blot analysis of extracts of various cell lines, using PIM2 rabbit monoclonal antibody (STJ11102458) at 1:1000 dilution. Secondary antibody: HRP Goat Anti-rabbit IgG (H+L) at 1:10000 dilution. Lysates/proteins: 25ug per lane. Blocking buffer: 3% non-fat dry milk in TBST. Detection: ECL Basic Kit. Exposure time: 1s.



Immunoprecipitation analysis of 300 Mu g extracts of Raji cells using 3 Mu g PIM2 antibody (STJ11102458). Western blot was performed from the immunoprecipitate using PIM2 antibody (STJ11102458) at a dilution of 1:1000.



Immunoprecipitation analysis of 300ug extracts of Raji cells using 3ug PIM2 antibody (STJ11102458). Western blot was performed from the immunoprecipitate using PIM2 antibody (STJ11102458) at a dilution of 1:1000.



Western blot analysis of various lysates, using PIM2 Rabbit monoclonal antibody (STJ11102458) at 1:1000 dilution. Secondary antibody: HRP Goat Anti-Rabbit IgG (H+L) (STJS000856) at 1:10000 dilution. Lysates/proteins: 25 Mu g per lane. Blocking buffer: 3% nonfat dry milk in TBST. Detection: ECL Basic Kit. Exposure time: 5s.

This product is suitable for in-vitro studies under the RESEARCH USE ONLY [RUO] licence. This product must not be used as for diagnostic or other medical purposes.
St John's Laboratory Ltd, Knowledge Dock Business Centre, University Way, London, E16 2RD | Tel: 0208 223 3081