

Anti-SOCS2 antibody (1-198) [S0MR] (STJ11102450)
STJ11102450

GENERAL INFORMATION

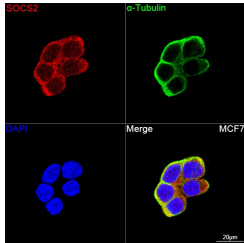
Product Type	Primary antibodies
Short Description	
Applications	WB/IHC-P/IF/ICC/ELISA
Host/Source	Rabbit
Reactivity	Human/Mouse/Rat

PRODUCT PROPERTIES

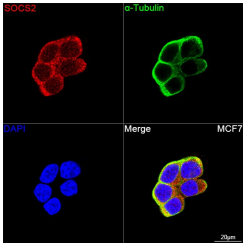
Clonality	Monoclonal
Clone ID	S0MR
Concentration	Lot specific
Conjugation	Unconjugated
Purification	Affinity purification
Dilution	WB:1:1000-1:4000
Range	IHC-P:1:100-1:1000 IF/ICC:1:50-1:200 ELISA:Recommended starting concentration is 1 Mu g/mL. Please optimize the concentration based on your specific assay requirements.
Formulation	PBS with 0.02% Sodium Azide, 0.05% BSA, 50% Glycerol, pH 7.3.
Isotype	IgG
Storage	Store at -20°C for up to 1 year from the date of receipt, and avoid repeat freeze-thaw cycles.
Instruction	

TARGET INFORMATION

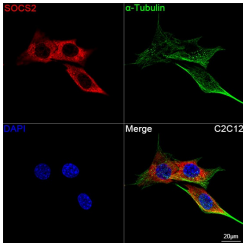
Gene ID	8835
Gene Symbol	SOCS2
Uniprot ID	SOCS2_HUMAN
Immunogen	
Immunogen Region	1-198
Specificity	Recombinant fusion protein containing a sequence corresponding to amino acids 1-198 of human SOCS2 (NP_001257400.1)
Immunogen Sequence	MTLRLCLEPSGNGGEGTRSQW GTAGSAEPPQAAARLAKAL RELGQTGWYWGSMTVNEAKE KLKEAPEGTFLIRDSSHSDY LLTISVKTSAGPTNLRIEQ DGKFRLDISIICVSKLQFD SVVHLIDYYVMCKDKRTGP EAPRNGTVHLYLTPLYTSA PSLQHLCLRLTINKCTGAIWG LPLPTRLKDYLEEYKFQV



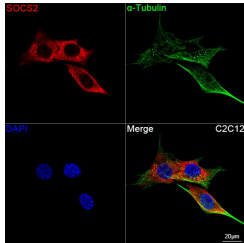
Western blot analysis of extracts of K-562 cells, using SOCS2 rabbit monoclonal antibody (STJ11102450) at 1:1000 dilution. Secondary antibody: HRP Goat Anti-rabbit IgG (H+L) at 1:10000 dilution. Lysates/proteins: 25ug per lane. Blocking buffer: 3% non-fat dry milk in TBST. Detection: ECL Basic Kit. Exposure time: 1s.



Confocal imaging of MCF7 cells using SOCS2 Rabbit monoclonal antibody (STJ11102450, dilution 1:200) followed by a further incubation with Cy3 Goat Anti-Rabbit IgG (H+L) (dilution 1:500) (Red). The cells were counterstained with Alpha-Tubulin Mouse monoclonal antibody (dilution 1:400) followed by incubation with ABffoA® 488-conjugated Goat Anti-Mouse IgG (H+L) antibody (dilution 1:500) (Green). DAPI was used for nuclear staining (Blue). Objective: 100x.



Western blot analysis of extracts of various cell lines, using SOCS2 rabbit monoclonal antibody (STJ11102450) at 1:1000 dilution. Secondary antibody: HRP Goat Anti-rabbit IgG (H+L) at 1:10000 dilution. Lysates/proteins: 25ug per lane. Blocking buffer: 3% non-fat dry milk in TBST. Detection: ECL Enhanced Kit. Exposure time: 3min.



Confocal imaging of C2C12 cells using SOCS2 Rabbit monoclonal antibody (STJ11102450, dilution 1:200) followed by a further incubation with Cy3 Goat Anti-Rabbit IgG (H+L) (dilution 1:500) (Red). The cells were counterstained with Alpha-Tubulin Mouse monoclonal antibody (dilution 1:400) followed by incubation with ABffoA® 488-conjugated Goat Anti-Mouse IgG (H+L) antibody (dilution 1:500) (Green). DAPI was used for nuclear staining (Blue). Objective: 100x.

This product is suitable for in-vitro studies under the RESEARCH USE ONLY [RUO] licence. This product must not be used as for diagnostic or other medical purposes.
St John's Laboratory Ltd, Knowledge Dock Business Centre, University Way, London, E16 2RD | Tel: 0208 223 3081