

Anti-SGCD antibody (190-289) [S6MR] (STJ11102446)
STJ11102446

GENERAL INFORMATION

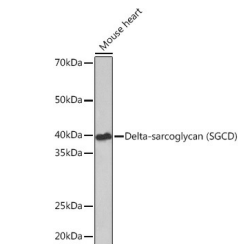
Product Type	Primary antibodies
Short Description	
Applications	WB/ELISA
Host/Source	Rabbit
Reactivity	Human/Mouse

PRODUCT PROPERTIES

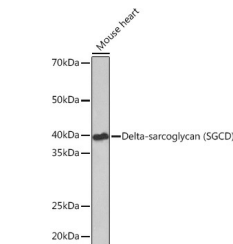
Clonality	Monoclonal
Clone ID	S6MR
Concentration	Lot specific
Conjugation	Unconjugated
Purification	Affinity purification
Dilution Range	WB:1:500-1:2000 ELISA:Recommended starting concentration is 1 Mu g/mL. Please optimize the concentration based on your specific assay requirements.
Formulation	PBS with 0.02% Sodium Azide, 0.05% BSA, 50% Glycerol, pH 7.3.
Isotype	IgG
Storage Instruction	Store at -20°C for up to 1 year from the date of receipt, and avoid repeat freeze-thaw cycles.

TARGET INFORMATION

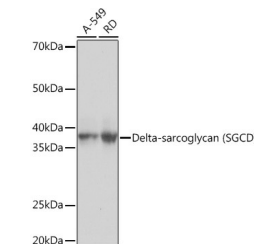
Gene ID	6444
Gene Symbol	SGCD
Uniprot ID	SGCD_HUMAN
Immunogen	
Immunogen	190-289
Region	
Specificity	A synthetic peptide corresponding to a sequence within amino acids 190-289 of human Delta-sarcoglycan (SGCD) (Q92629).
Immunogen	LRLESPTRSLVMEAPKGV E I NAEAGNMEATCRTELRL ESK DGEIKLDAAKIRLPRLPHGS YTPGTGRQKVFEICVCANGR
Sequence	LFLSQAGAGSTCQINTSVCL



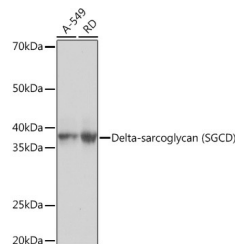
Western blot analysis of extracts of various cell lines, using Delta-sarcoglycan (SGCD) rabbit monoclonal antibody (STJ11102446) at 1:1000 dilution. Secondary antibody: HRP Goat Anti-rabbit IgG (H+L) at 1:10000 dilution. Lysates/proteins: 25ug per lane. Blocking buffer: 3% non-fat dry milk in TBST. Detection: ECL Basic Kit. Exposure time: 3s.



Western blot analysis of extracts of Mouse heart, using Delta-sarcoglycan (SGCD) Rabbit monoclonal antibody (STJ11102446) at 1:1000 dilution. Secondary antibody: HRP Goat Anti-Rabbit IgG (H+L) (STJS000856) at 1:10000 dilution. Lysates/proteins: 25 Mu g per lane. Blocking buffer: 3% nonfat dry milk in TBST. Detection: ECL Basic Kit. Exposure time: 90s.



Western blot analysis of extracts of mouse heart, using Delta-sarcoglycan (SGCD) rabbit monoclonal antibody (STJ11102446) at 1:1000 dilution. Secondary antibody: HRP Goat Anti-rabbit IgG (H+L) at 1:10000 dilution. Lysates/proteins: 25ug per lane. Blocking buffer: 3% non-fat dry milk in TBST. Detection: ECL Basic Kit. Exposure time: 90s.



Western blot analysis of extracts of various cell lines, using Delta-sarcoglycan (SGCD) Rabbit monoclonal antibody (STJ11102446) at 1:1000 dilution. Secondary antibody: HRP Goat Anti-Rabbit IgG (H+L) (STJS000856) at 1:10000 dilution. Lysates/proteins: 25 Mu g per lane. Blocking buffer: 3% nonfat dry milk in TBST. Detection: ECL Basic Kit. Exposure time: 3s.

This product is suitable for in-vitro studies under the RESEARCH USE ONLY [RUO] licence. This product must not be used as for diagnostic or other medical purposes.
St John's Laboratory Ltd, Knowledge Dock Business Centre, University Way, London, E16 2RD | Tel: 0208 223 3081