

# Anti-HMGB2 antibody (1-100) [S4MR] (STJ11102444)

STJ11102444

## GENERAL INFORMATION

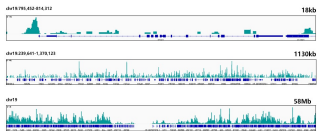
<b>Product Type</b>	Primary antibodies
<b>Short Description</b>	
<b>Applications</b>	WB/IHC-P/IF/ICC/IP/ELISA/ChIP/CUT&Tag
<b>Host/Source</b>	Rabbit
<b>Reactivity</b>	Human/Mouse/Rat

## PRODUCT PROPERTIES

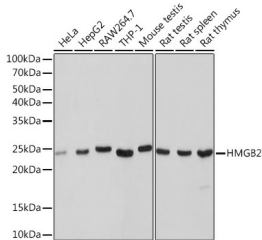
<b>Clonality</b>	Monoclonal
<b>Clone ID</b>	S4MR
<b>Concentration</b>	Lot specific
<b>Conjugation</b>	Unconjugated
<b>Purification</b>	Affinity purification
<b>Dilution Range</b>	WB:1:1000-1:6000 IHC-P:1:200-1:2000 IF/ICC:1:100-1:1000 IP:0.5 Mu g-4 Mu g antibody for 200 Mu g-400 Mu g extracts of whole cells ELISA:Recommended starting concentration is 1 Mu g/mL. Please optimize the concentration based on your s
<b>Formulation</b>	PBS with 0.02% Sodium Azide, 0.05% BSA, 50% Glycerol, pH 7.3.
<b>Isotype</b>	IgG
<b>Storage</b>	Store at -20°C for up to 1 year from the date of receipt, and avoid repeat freeze-thaw cycles.
<b>Instruction</b>	

## TARGET INFORMATION

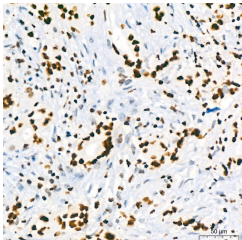
<b>Gene ID</b>	3148
<b>Gene Symbol</b>	HMGB2
<b>Uniprot ID</b>	HMGB2_HUMAN
<b>Immunogen</b>	
<b>Immunogen</b>	1-100
<b>Region</b>	
<b>Specificity</b>	A synthetic peptide corresponding to a sequence within amino acids 1-100 of human HMGB2 (P26583).
<b>Immunogen</b>	MGKGDPNKPGRKMSSYAFFV QTCREEHKKKHPDSSVNF AE FSKKCSERWKTMSAKEKSKF EDMAKSDKARYDREMKNYVP
<b>Sequence</b>	PKGDKKGGKKDPNAPKRPPS



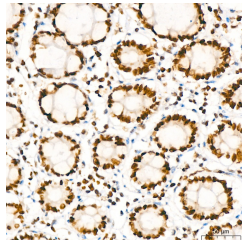
CUT&Tag was performed using the CUT&Tag Assay Kit (pAG-Tn5) for Illumina (RK20265) from 10<sup>6</sup> K562 cells with 1 Mu g HMGB2 rabbit monoclonal antibody (STJ11102444) along with a Goat Anti-rabbit IgG (H+L). The CUT&Tag results indicate the enrichment pattern of HMGB2 in representative gene loci (PTBP1), as shown in figure.



Western blot analysis of extracts from various cell lines, using HMGB2 rabbit monoclonal antibody (STJ11102444) at 1:1000 dilution. Secondary antibody: HRP Goat Anti-rabbit IgG (H+L) (STJ500895) at 1:10000 dilution. Lysates/proteins: 25 Mu g per lane. Blocking buffer: 3% non-fat dry milk in TBST. Detection: ECL Basic Kit. Exposure time: 1s.



Immunohistochemistry analysis of paraffin-embedded human breast cancer using HMGB2 rabbit monoclonal antibody (STJ11102444) at dilution of 1:200 (40x lens). Perform high pressure antigen retrieval with 10 mM Tris/EDTA buffer pH 9.0 before commencing with immunohistochemistry staining protocol.



Immunohistochemistry analysis of paraffin-embedded human colon using HMGB2 rabbit monoclonal antibody (STJ11102444) at dilution of 1:200 (40x lens). Perform high pressure antigen retrieval with 10 mM Tris/EDTA buffer pH 9.0 before commencing with immunohistochemistry staining protocol.

This product is suitable for in-vitro studies under the RESEARCH USE ONLY [RUO] licence. This product must not be used as for diagnostic or other medical purposes.  
St John's Laboratory Ltd, Knowledge Dock Business Centre, University Way, London, E16 2RD | Tel: 0208 223 3081