

Anti-HSPB6 antibody (70-150) [S2MR] (STJ11102422)
STJ11102422

GENERAL INFORMATION

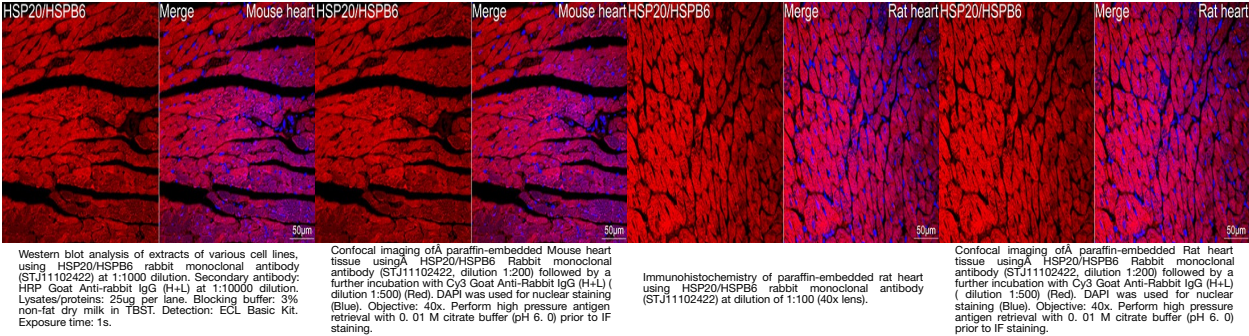
Product Type	Primary antibodies
Short Description	
Applications	WB/IHC-P/IF/ICC/ELISA
Host/Source	Rabbit
Reactivity	Human/Mouse/Rat

PRODUCT PROPERTIES

Clonality	Monoclonal
Clone ID	S2MR
Concentration	Lot specific
Conjugation	Unconjugated
Purification	Affinity purification
Dilution Range	WB:1:500-1:1000 IHC-P:1:50-1:200 IF/ICC:1:50-1:200 ELISA:Recommended starting concentration is 1 μ g/mL. Please optimize the concentration based on your specific assay requirements.
Formulation	PBS with 0.02% Sodium Azide, 0.05% BSA, 50% Glycerol, pH 7.3.
Isotype	IgG
Storage Instruction	Store at -20°C for up to 1 year from the date of receipt, and avoid repeat freeze-thaw cycles.

TARGET INFORMATION

Gene ID	126393
Gene Symbol	HSPB6
Uniprot ID	HSPB6_HUMAN
Immunogen	
Immunogen Region	70-150
Specificity	A synthetic peptide corresponding to a sequence within amino acids 70-150 of human HSP20/HSPB6 (O14558).
Immunogen Sequence	DPGHFSVLLDVKHFSPEEIA VKVGEHVEVHARHEERPDE HGFVAREFHRRYRLPPGVDP AAVTSALSPEGVLSIQAAPA S



This product is suitable for in-vitro studies under the RESEARCH USE ONLY [RUO] licence. This product must not be used as for diagnostic or other medical purposes.
St John's Laboratory Ltd, Knowledge Dock Business Centre, University Way, London, E16 2RD | Tel: 0208 223 3081