

**Anti-PTGER2 antibody (259-358) [S4MR] (STJ11102414)**  
STJ11102414

**GENERAL INFORMATION**

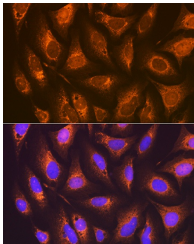
<b>Product Type</b>	Primary antibodies
<b>Short Description</b>	
<b>Applications</b>	WB/IHC-P/IF/ICC/ELISA
<b>Host/Source</b>	Rabbit
<b>Reactivity</b>	Human/Mouse/Rat

**PRODUCT PROPERTIES**

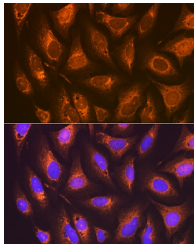
<b>Clonality</b>	Monoclonal
<b>Clone ID</b>	S4MR
<b>Concentration</b>	Lot specific
<b>Conjugation</b>	Unconjugated
<b>Purification</b>	Affinity purification
<b>Dilution Range</b>	WB:1:1000-1:6000 IHC-P:1:100-1:1000 IF/ICC:1:100-1:400 ELISA:Recommended starting concentration is 1 µg/mL. Please optimize the concentration based on your specific assay requirements.
<b>Formulation</b>	PBS with 0.02% Sodium Azide, 0.05% BSA, 50% Glycerol, pH 7.3.
<b>Isotype</b>	IgG
<b>Storage Instruction</b>	Store at -20°C for up to 1 year from the date of receipt, and avoid repeat freeze-thaw cycles.

**TARGET INFORMATION**

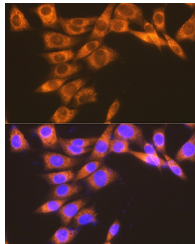
<b>Gene ID</b>	5732
<b>Gene Symbol</b>	PTGER2
<b>Uniprot ID</b>	PE2R2_HUMAN
<b>Immunogen</b>	
<b>Immunogen Region</b>	259-358
<b>Specificity</b>	A synthetic peptide corresponding to a sequence within amino acids 259-358 of human PGE receptor EP2 (PTGER2) (P43116).
<b>Immunogen Sequence</b>	ETDHLILLAIMTITFAVCSL PFTIFAYMNETSSRKEKWDL QALRFLSINSIIDPWVFAIL RPPVLRMLMRSLCCRISLRT QDATQTSCSTQSDASKQADL



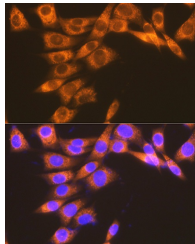
Western blot analysis of extracts of various cell lines, using PGE Receptor EP2 (PGE Receptor EP2 (PGE receptor EP2 (PTGER2) ) ) rabbit monoclonal antibody (STJ11102414) at 1:1000 dilution. Secondary antibody: HRP-Goat Anti-rabbit IgG (H+L) at 1:10000 dilution. Lysates/proteins: 25µg per lane. Blocking buffer: 3% non-fat dry milk in TBST. Detection: ECL Basic Kit. Exposure time: 3s.



Immunofluorescence analysis of U-2 OS cells using PGE Receptor EP2 (PGE Receptor EP2 (PGE receptor EP2 (PTGER2) ) ) Rabbit monoclonal antibody (STJ11102414) at dilution of 1:100 (40x lens). Blue: DAPI for nuclear staining.



Immunohistochemistry of paraffin-embedded human placenta using PGE Receptor EP2 (PGE Receptor EP2 (PGE receptor EP2 (PTGER2) ) ) rabbit monoclonal antibody (STJ11102414) at dilution of 1:100 (40x lens). Perform microwave antigen retrieval with 10 mM Tris/EDTA buffer pH 9.0 before commencing with immunohistochemistry staining protocol.



Immunofluorescence analysis of NIH-3T3 cells using PGE Receptor EP2 (PGE Receptor EP2 (PGE receptor EP2 (PTGER2) ) ) Rabbit monoclonal antibody (STJ11102414) at dilution of 1:100 (40x lens). Blue: DAPI for nuclear staining.

This product is suitable for in-vitro studies under the RESEARCH USE ONLY [RUO] licence. This product must not be used as for diagnostic or other medical purposes.  
St John's Laboratory Ltd, Knowledge Dock Business Centre, University Way, London, E16 2RD | Tel: 0208 223 3081