

Anti-UBD antibody (70-150) [S7MR] (STJ11102407)

STJ11102407

GENERAL INFORMATION

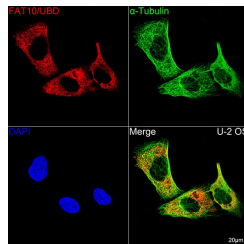
Product Type	Primary antibodies
Short Description	
Applications	WB/IF/ICC/ELISA
Host/Source	Rabbit
Reactivity	Human/Mouse/Rat

PRODUCT PROPERTIES

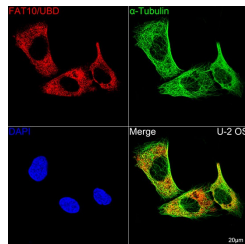
Clonality	Monoclonal
Clone ID	S7MR
Concentration	Lot specific
Conjugation	Unconjugated
Purification	Affinity purification
Dilution Range	WB:1:500-1:2000 IF/ICC:1:50-1:200 ELISA:Recommended starting concentration is 1 μ g/mL. Please optimize the concentration based on your specific assay requirements.
Formulation	PBS with 0.02% Sodium Azide, 0.05% BSA, 50% Glycerol, pH 7.3.
Isotype	IgG
Storage Instruction	Store at -20°C for up to 1 year from the date of receipt, and avoid repeat freeze-thaw cycles.

TARGET INFORMATION

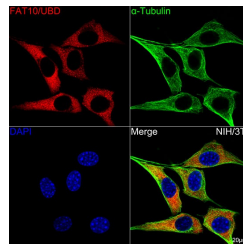
Gene ID	10537
Gene Symbol	UBD
Uniprot ID	UBD_HUMAN
Immunogen	
Immunogen Region	70-150
Specificity	A synthetic peptide corresponding to a sequence within amino acids 70-150 of human FAT10/UBD (O15205).
Immunogen Sequence	KEKTIHLTLKVKPSDEELP LFLVESGDEAKRHLLQVRRS SSSVAQVKAMIEKTGIIIPET QIVTCNGKRLEDGKMMADYG I



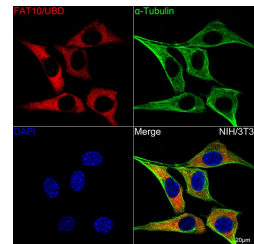
Western blot analysis of extracts of various cell lines, using FAT10/UBD rabbit monoclonal antibody (STJ11102407) at 1:1000 dilution. Secondary antibody: HRP Goat Anti-rabbit IgG (H+L) at 1:10000 dilution. Lysates/proteins: 25 μ g per lane. Blocking buffer: 3% non-fat dry milk in TBST. Detection: ECL Basic Kit. Exposure time: 30s.



Confocal imaging of U-2 OS cells using FAT10/UBD Rabbit monoclonal antibody (STJ11102407, dilution 1:100) (Red). The cells were counterstained with Alpha-Tubulin Mouse monoclonal antibody (dilution 1:400) (Green). DAPI was used for nuclear staining (blue). Objective: 100x.



Immunofluorescence analysis of C6 cells using FAT10/UBD rabbit monoclonal antibody (STJ11102407) at dilution of 1:100 (40x lens). Blue: DAPI for nuclear staining.



Confocal imaging of NIH/3T3 cells using FAT10/UBD Rabbit monoclonal antibody (STJ11102407, dilution 1:100) (Red). The cells were counterstained with Alpha-Tubulin Mouse monoclonal antibody (dilution 1:400) (Green). DAPI was used for nuclear staining (blue). Objective: 100x.

This product is suitable for in-vitro studies under the RESEARCH USE ONLY [RUO] licence. This product must not be used as for diagnostic or other medical purposes.
St John's Laboratory Ltd, Knowledge Dock Business Centre, University Way, London, E16 2RD | Tel: 0208 223 3081