

Anti-YWHAQ antibody (1-100) [S9MR] (STJ11102399)
STJ11102399

GENERAL INFORMATION

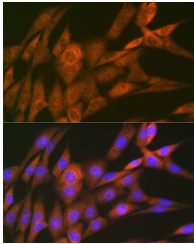
| | |
|--------------------------|--------------------|
| Product Type | Primary antibodies |
| Short Description | |
| Applications | WB/IF/ICC/ELISA |
| Host/Source | Rabbit |
| Reactivity | Human/Mouse/Rat |

PRODUCT PROPERTIES

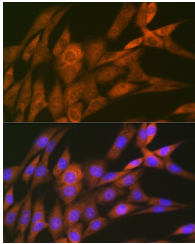
| | |
|----------------------------|---|
| Clonality | Monoclonal |
| Clone ID | S9MR |
| Concentration | Lot specific |
| Conjugation | Unconjugated |
| Purification | Affinity purification |
| Dilution Range | WB:1:500-1:2000 IF/ICC:1:50-1:200 ELISA:Recommended starting concentration is 1 Mu g/mL. Please optimize the concentration based on your specific assay requirements. |
| Formulation | PBS with 0.02% Sodium Azide, 0.05% BSA, 50% Glycerol, pH 7.3. |
| Isotype | IgG |
| Storage Instruction | Store at -20°C for up to 1 year from the date of receipt, and avoid repeat freeze-thaw cycles. |

TARGET INFORMATION

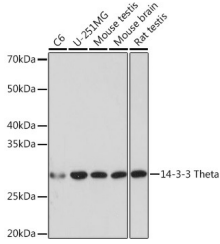
| | |
|---------------------------|--|
| Gene ID | 10971 |
| Gene Symbol | YWHAQ |
| Uniprot ID | 1433T_HUMAN |
| Immunogen | |
| Immunogen Region | 1-100 |
| Specificity | A synthetic peptide corresponding to a sequence within amino acids 1-100 of human 14-3-3 Theta (P27348). |
| Immunogen Sequence | MEKTELIQKAKLAEQAERYD DMATCMKAVTEQGAELSNEE RNLLSVAYKNVVGRRSAWR VISSIEQKTDTSDDKLLQLIK DYREKVESELSRICTTVLEL |



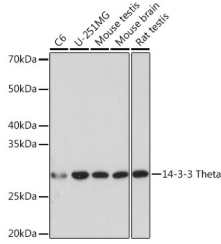
Western blot analysis of extracts of various cell lines, using 14-3-3 Theta rabbit monoclonal antibody (STJ11102399) at 1:1000 dilution. Secondary antibody: HRP Goat Anti-rabbit IgG (H+L) at 1:10000 dilution. Lysates/proteins: 25ug per lane. Blocking buffer: 3% non-fat dry milk in TBST. Detection: ECL Basic Kit. Exposure time: 10s.



Immunofluorescence analysis of NIH-3T3 cells using 14-3-3 Theta Rabbit monoclonal antibody (STJ11102399) at dilution of 1:100 (40x lens). Blue: DAPI for nuclear staining.



Immunofluorescence analysis of NIH-3T3 cells using 14-3-3 Theta rabbit monoclonal antibody (STJ11102399) at dilution of 1:100 (40x lens). Blue: DAPI for nuclear staining.



Western blot analysis of extracts of various cell lines, using 14-3-3 Theta Rabbit monoclonal antibody (STJ11102399) at 1:1000 dilution. Secondary antibody: HRP Goat Anti-Rabbit IgG (H+L) (STJ5000856) at 1:10000 dilution. Lysates/proteins: 25 Mu g per lane. Blocking buffer: 3% nonfat dry milk in TBST. Detection: ECL Basic Kit. Exposure time: 10s.