

Anti-LTA4H antibody (501-600) [S5MR] (STJ11102395)
STJ11102395

GENERAL INFORMATION

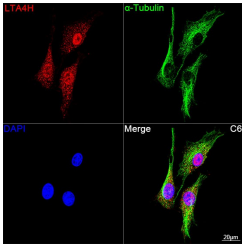
Product Type	Primary antibodies
Short Description	
Applications	WB/IF/ICC/ELISA
Host/Source	Rabbit
Reactivity	Human/Mouse/Rat

PRODUCT PROPERTIES

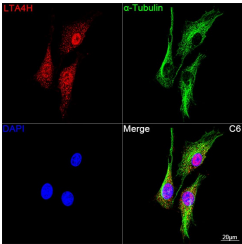
Clonality	Monoclonal
Clone ID	S5MR
Concentration	Lot specific
Conjugation	Unconjugated
Purification	Affinity purification
Dilution Range	WB:1:500-1:1000 IF/ICC:1:50-1:200 ELISA:Recommended starting concentration is 1 Mu g/mL. Please optimize the concentration based on your specific assay requirements.
Formulation	PBS with 0.02% Sodium Azide, 0.05% BSA, 50% Glycerol, pH 7.3.
Isotype	IgG
Storage Instruction	Store at -20°C for up to 1 year from the date of receipt, and avoid repeat freeze-thaw cycles.

TARGET INFORMATION

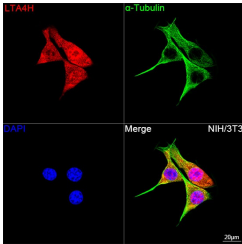
Gene ID	4048
Gene Symbol	LTA4H
Uniprot ID	LKHA4_HUMAN
Immunogen	
Immunogen Region	501-600
Specificity	Recombinant fusion protein containing a sequence corresponding to amino acids 501-600 of human LTA4H (P09960).
Immunogen Sequence	NEFLAQLTQRAPLPLGHIKR MQEVYNFNAINNSEIRFWL RLCIQSKWEDAIPALKMAT EQGRMKFTRPLFKDLAAFDK SHDQAVRTYQEHKASMPVT



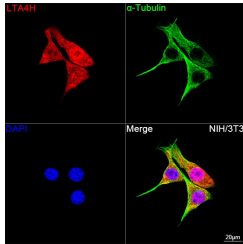
Western blot analysis of extracts of various cell lines, using LTA4H rabbit monoclonal antibody (STJ11102395) at 1:1000 dilution. Secondary antibody: HRP Goat Anti-rabbit IgG (H+L) at 1:10000 dilution. Lysates/proteins: 25µg per lane. Blocking buffer: 3% non-fat dry milk in TBST. Detection: ECL Basic Kit. Exposure time: 10s.



Confocal imaging of C6 cells using LTA4H Rabbit monoclonal antibody (STJ11102395, dilution 1:200) followed by a further incubation with Cy3 Goat Anti-Rabbit IgG (H+L) (dilution 1:500) (Red). The cells were counterstained with Alpha-Tubulin Mouse monoclonal antibody (dilution 1:400) followed by incubation with AB80A@488-conjugated Goat Anti-Mouse IgG (H+L) antibody (dilution 1:500) (Green). DAPI was used for nuclear staining (Blue). Objective: 100x.



Immunofluorescence analysis of C6 cells using LTA4H rabbit monoclonal antibody (STJ11102395) at dilution of 1:100 (40x lens). Blue: DAPI for nuclear staining.



Confocal imaging of NIH/3T3 cells using LTA4H Rabbit monoclonal antibody (STJ11102395, dilution 1:200) followed by a further incubation with Cy3 Goat Anti-Rabbit IgG (H+L) (dilution 1:500) (Red). The cells were counterstained with Alpha-Tubulin Mouse monoclonal antibody (dilution 1:400) followed by incubation with AB80A@488-conjugated Goat Anti-Mouse IgG (H+L) antibody (dilution 1:500) (Green). DAPI was used for nuclear staining (Blue). Objective: 100x.

This product is suitable for in-vitro studies under the RESEARCH USE ONLY [RUO] licence. This product must not be used as for diagnostic or other medical purposes.
St John's Laboratory Ltd, Knowledge Dock Business Centre, University Way, London, E16 2RD | Tel: 0208 223 3081