

**Anti-GYS1 antibody (638-737) [S4MR] (STJ11102394)**  
STJ11102394

**GENERAL INFORMATION**

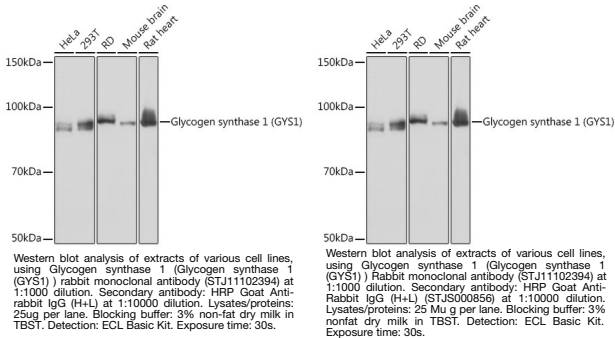
<b>Product Type</b>	Primary antibodies
<b>Short Description</b>	
<b>Applications</b>	WB/ELISA
<b>Host/Source</b>	Rabbit
<b>Reactivity</b>	Human/Mouse/Rat

**PRODUCT PROPERTIES**

<b>Clonality</b>	Monoclonal
<b>Clone ID</b>	S4MR
<b>Concentration</b>	Lot specific
<b>Conjugation</b>	Unconjugated
<b>Purification</b>	Affinity purification
<b>Dilution Range</b>	WB:1:1000-1:4000 ELISA:Recommended starting concentration is 1 Mu g/mL. Please optimize the concentration based on your specific assay requirements.
<b>Formulation</b>	PBS with 0.02% Sodium Azide, 0.05% BSA, 50% Glycerol, pH 7.3.
<b>Isotype</b>	IgG
<b>Storage</b>	Store at -20°C for up to 1 year from the date of receipt, and avoid repeat freeze-thaw cycles.
<b>Instruction</b>	

**TARGET INFORMATION**

<b>Gene ID</b>	2997
<b>Gene Symbol</b>	GYS1
<b>Uniprot ID</b>	GYS1_HUMAN
<b>Immunogen</b>	
<b>Immunogen</b>	638-737
<b>Region</b>	
<b>Specificity</b>	A synthetic peptide corresponding to a sequence within amino acids 638-737 of human Glycogen synthase (P13807).
<b>Immunogen</b>	RPASVPPSPSLSRHSSPHQS EEEDPRNGPLEEDGERYDE DEEAADRNRIRAPEWPRRA SCTSTSGSKRNSVDATSS
<b>Sequence</b>	SLSTPSEPLSPTSSLGEERN



This product is suitable for in-vitro studies under the RESEARCH USE ONLY [RUO] licence. This product must not be used as for diagnostic or other medical purposes.  
St John's Laboratory Ltd, Knowledge Dock Business Centre, University Way, London, E16 2RD | Tel: 0208 223 3081