

Anti-HPRT1 antibody (119-218) [S5MR] (STJ11102375)
STJ11102375

GENERAL INFORMATION

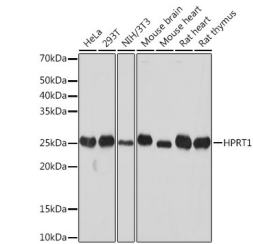
Product Type	Primary antibodies
Short Description	
Applications	WB/ELISA
Host/Source	Rabbit
Reactivity	Human/Mouse/Rat

PRODUCT PROPERTIES

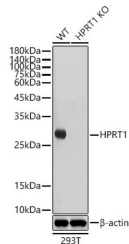
Clonality	Monoclonal
Clone ID	S5MR
Concentration	Lot specific
Conjugation	Unconjugated
Purification	Affinity purification
Dilution Range	WB:1:1000-1:6000 ELISA:Recommended starting concentration is 1 Mu g/mL. Please optimize the concentration based on your specific assay requirements.
Formulation	PBS with 0.02% Sodium Azide, 0.05% BSA, 50% Glycerol, pH 7.3.
Isotype	IgG
Storage Instruction	Store at -20°C for up to 1 year from the date of receipt, and avoid repeat freeze-thaw cycles.

TARGET INFORMATION

Gene ID	3251
Gene Symbol	HPRT1
Uniprot ID	HPRT_HUMAN
Immunogen	
Immunogen Region	119-218
Specificity	A synthetic peptide corresponding to a sequence within amino acids 119-218 of human HPRT11 (NP_000185.1).
Immunogen Sequence	GDDLSTLTGKNVLIVEDIID TGKTMQTLLSLVRQYNPKMV KVASLLVKRTPRSVGYPDF VGFEIPDKFVVGALDYNEY FRDLNHVCVISETGKAKYKA



Western blot analysis of extracts of various cell lines, using HPRT1 rabbit monoclonal antibody (STJ11102375) at 1:1000 dilution. Secondary antibody: HRP Goat Anti-rabbit IgG (H+L) (STJS000856) at 1:10000 dilution. Lysates/proteins: 25 Mu g per lane. Blocking buffer: 3% non-fat dry milk in TBST. Detection: ECL Basic Kit. Exposure time: 10s.



Western blot analysis of extracts from wild type (WT) and HPRT1 knockout (KO) 293T cells, using HPRT1 antibody (STJ11102375) at 1:1000 dilution. Secondary antibody: HRP Goat Anti-rabbit IgG (H+L) (STJS000856) at 1:10000 dilution. Lysates/proteins: 25 Mu g per lane. Blocking buffer: 3% non-fat dry milk in TBST. Detection: ECL Basic Kit. Exposure time: 5s.

This product is suitable for in-vitro studies under the RESEARCH USE ONLY [RUO] licence. This product must not be used as for diagnostic or other medical purposes.
St John's Laboratory Ltd, Knowledge Dock Business Centre, University Way, London, E16 2RD | Tel: 0208 223 3081