

Anti-EEF1G antibody (1-123) [S7MR] (STJ11102367)

STJ11102367

GENERAL INFORMATION

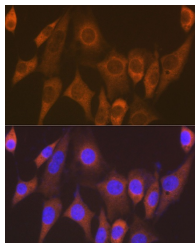
Product Type	Primary antibodies
Short Description	
Applications	WB/IHC-P/IF/ICC/ELISA
Host/Source	Rabbit
Reactivity	Human/Mouse/Rat

PRODUCT PROPERTIES

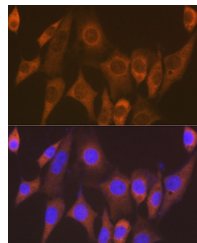
Clonality	Monoclonal
Clone ID	S7MR
Concentration	Lot specific
Conjugation	Unconjugated
Purification	Affinity purification
Dilution Range	WB:1:500-1:2000 IHC-P:1:500-1:1000 IF/ICC:1:50-1:200 ELISA:Recommended starting concentration is 1 Mu g/mL. Please optimize the concentration based on your specific assay requirements.
Formulation	PBS with 0.02% Sodium Azide, 0.05% BSA, 50% Glycerol, pH 7.3.
Isotype	IgG
Storage	Store at -20°C for up to 1 year from the date of receipt, and avoid repeat freeze-thaw cycles.
Instruction	

TARGET INFORMATION

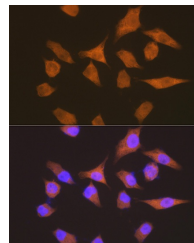
Gene ID	1937
Gene Symbol	EEF1G
Uniprot ID	EF1G_HUMAN
Immunogen	
Immunogen Region	1-123
Specificity	Recombinant fusion protein containing a sequence corresponding to amino acids 1-123 of human eEF1G (P26641).
Immunogen Sequence	MAAGTLTYYPENWRAFKALI AAQYSGAQVRVLSAPPHFHF GQTNRTPPEFLRKFPAGKVPA FEGDDGFCVFESNAIAYYS
Sequence	NEELRGSTPEAAQVQWWS FADSDIVPPASTWVFPTLGI MHH



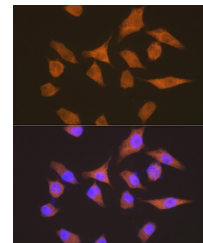
Western blot analysis of extracts of various cell lines, using eEF1G rabbit monoclonal antibody (STJ11102367) at 1:1000 dilution. Secondary antibody: HRP Goat Anti-rabbit IgG (H+L) at 1:10000 dilution. Lysates/proteins: 25ug per lane. Blocking buffer: 3% non-fat dry milk in TBST. Detection: ECL Basic Kit. Exposure time: 10s.



Immunofluorescence analysis of NIH-3T3 cells using eEF1G Rabbit monoclonal antibody (STJ11102367) at dilution of 1:100 (40x lens). Blue: DAPI for nuclear staining.



Immunohistochemistry of paraffin-embedded rat brain using eEF1G rabbit monoclonal antibody (STJ11102367) at dilution of 1:100 (40x lens). Perform microwave antigen retrieval with 10 mM Tris/EDTA buffer pH 9.0 before commencing with immunohistochemistry staining protocol.



Immunofluorescence analysis of HeLa cells using eEF1G Rabbit monoclonal antibody (STJ11102367) at dilution of 1:100 (40x lens). Blue: DAPI for nuclear staining.

This product is suitable for in-vitro studies under the RESEARCH USE ONLY [RUO] licence. This product must not be used as for diagnostic or other medical purposes.

St John's Laboratory Ltd, Knowledge Dock Business Centre, University Way, London, E16 2RD | Tel: 0208 223 3081