

Anti-SSTR5 antibody (1-100) [S6MR] (STJ11102356)
STJ11102356

GENERAL INFORMATION

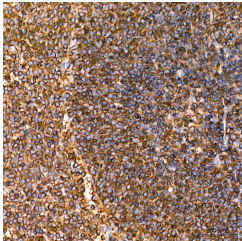
Product Type	Primary antibodies
Short Description	
Applications	WB/IHC-P/ELISA
Host/Source	Rabbit
Reactivity	Human/Mouse/Rat

PRODUCT PROPERTIES

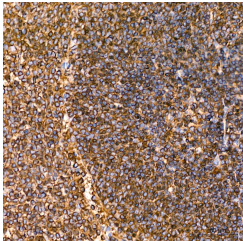
Clonality	Monoclonal
Clone ID	S6MR
Concentration	Lot specific
Conjugation	Unconjugated
Purification	Affinity purification
Dilution Range	WB:1:500-1:2000 IHC-P:1:500-1:1000 ELISA:Recommended starting concentration is 1 Mu g/mL. Please optimize the concentration based on your specific assay requirements.
Formulation	PBS with 0.02% Sodium Azide, 0.05% BSA, 50% Glycerol, pH 7.3.
Isotype	IgG
Storage Instruction	Store at -20°C for up to 1 year from the date of receipt, and avoid repeat freeze-thaw cycles.

TARGET INFORMATION

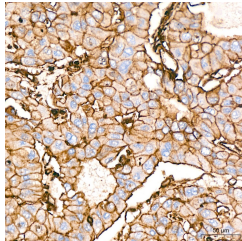
Gene ID	6755
Gene Symbol	SSTR5
Uniprot ID	SSR5_HUMAN
Immunogen	
Immunogen Region	1-100
Specificity	A synthetic peptide corresponding to a sequence within amino acids 1-100 of human SSTR5 (P35346).
Immunogen Sequence	MEPLFPASTPSWNASSPGAA SGGGDNRTLVGPAAPSAGARA VLPVLYLLVCAAGLGGNL VIYVLRFAKMKVTNIIYL NLAVADVLYMLGLPFLATQN



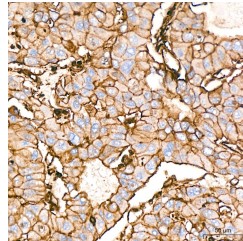
Western blot analysis of extracts of various cell lines, using SSTR5 rabbit monoclonal antibody (STJ11102356) at 1:1000 dilution. Secondary antibody: HRP Goat Anti-rabbit IgG (H+L) at 1:10000 dilution. Lysates/proteins: 25ug per lane. Blocking buffer: 3% non-fat dry milk in TBST. Detection: ECL Basic Kit. Exposure time: 3s.



Immunohistochemistry analysis of rat spleen tissue using SSTR5 Rabbit monoclonal antibody (STJ11102356) at a dilution of 1:800 (40x lens). High pressure antigen retrieval was performed with 0.01 M citrate buffer (pH 6.0) prior to immunohistochemistry staining.



Immunohistochemistry of paraffin-embedded rat testis using SSTR5 rabbit monoclonal antibody (STJ11102356) at dilution of 1:100 (40x lens).



Immunohistochemistry analysis of human liver cancer tissue using SSTR5 Rabbit monoclonal antibody (STJ11102356) at a dilution of 1:800 (40x lens). High pressure antigen retrieval was performed with 0.01 M citrate buffer (pH 6.0) prior to immunohistochemistry staining.

This product is suitable for in-vitro studies under the RESEARCH USE ONLY [RUO] licence. This product must not be used as for diagnostic or other medical purposes.
St John's Laboratory Ltd, Knowledge Dock Business Centre, University Way, London, E16 2RD | Tel: 0208 223 3081