

Anti-PSENEN antibody (1-101) [S2MR] (STJ11102352)
STJ11102352

GENERAL INFORMATION

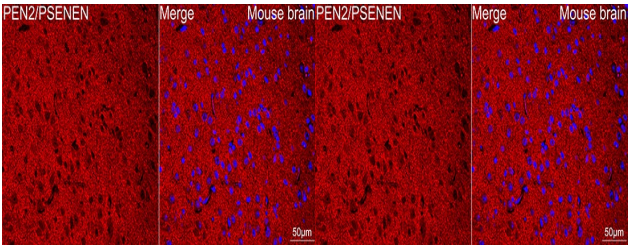
Product Type	Primary antibodies
Short Description	
Applications	WB/IF/ICC/ELISA
Host/Source	Rabbit
Reactivity	Human/Mouse/Rat

PRODUCT PROPERTIES

Clonality	Monoclonal
Clone ID	S2MR
Concentration	Lot specific
Conjugation	Unconjugated
Purification	Affinity purification
Dilution Range	WB:1:1000-1:6000 IF/ICC:1:100-1:400 ELISA:Recommended starting concentration is 1 µg/mL. Please optimize the concentration based on your specific assay requirements.
Formulation	PBS with 0.02% Sodium Azide, 0.05% BSA, 50% Glycerol, pH 7.3.
Isotype	IgG
Storage Instruction	Store at -20°C for up to 1 year from the date of receipt, and avoid repeat freeze-thaw cycles.

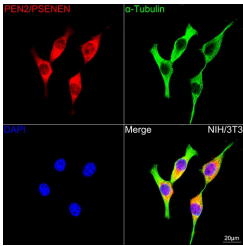
TARGET INFORMATION

Gene ID	55851
Gene Symbol	PSENEN
Uniprot ID	PEN2_HUMAN
Immunogen	
Immunogen Region	1-101
Specificity	Recombinant fusion protein containing a sequence corresponding to amino acids 1-101 of human PEN2/PSENEN (NP_758844.1)
Immunogen Sequence	MNLERVSNEEKLNLCKRYYL GGFAFLPFLWLNVNFWFFRE AFLVPAYTEQSQIKGYVWRS AVGFLFWIVLTSWITFIQI YRPRWGALGDYLSFTIPLGT P

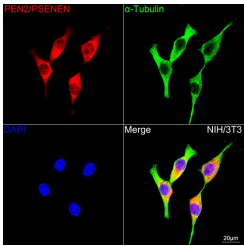


Western blot analysis of extracts of various cell lines, using PEN2/PSENEN rabbit monoclonal antibody (STJ11102352) at 1:1000 dilution. Secondary antibody: HRP Goat Anti-rabbit IgG (H+L) at 1:10000 dilution. Lysates/proteins: 25µg per lane. Blocking buffer: 3% non-fat dry milk in TBST. Detection: ECL Basic Kit. Exposure time: 10s.

Confocal imaging of a paraffin-embedded Mouse brain using a PEN2/PSENEN Rabbit monoclonal antibody (STJ11102352, dilution 1:100) followed by a further incubation with Cy3 Goat Anti-Rabbit IgG (H+L) (dilution 1:500) (Red). DAPI was used for nuclear staining (Blue). Objective: 40x. Perform microwave antigen retrieval with 0.01 M citrate buffer (pH 6.0) prior to IF staining.



Immunofluorescence analysis of NIH-3T3 cells using PEN2/PSENEN rabbit monoclonal antibody (STJ11102352) at dilution of 1:100 (40x lens). Blue: DAPI for nuclear staining.



Confocal imaging of NIH/3T3 cells using a PEN2/PSENEN Rabbit monoclonal antibody (STJ11102352, dilution 1:100) followed by a further incubation with Cy3 Goat Anti-Rabbit IgG (H+L) (dilution 1:500) (Red). The cells were counterstained with Alpha-Tubulin Mouse monoclonal antibody (dilution 1:400) followed by incubation with ABTioA@488-conjugated Goat Anti-Mouse IgG (H+L) antibody (dilution 1:500) (Green). DAPI was used for nuclear staining (Blue). Objective: 100x.

This product is suitable for in-vitro studies under the RESEARCH USE ONLY [RUO] licence. This product must not be used as for diagnostic or other medical purposes.
St John's Laboratory Ltd, Knowledge Dock Business Centre, University Way, London, E16 2RD | Tel: 0208 223 3081