

Anti-EIF2B5 antibody (1-100) [S0MR] (STJ11102350)
STJ11102350

GENERAL INFORMATION

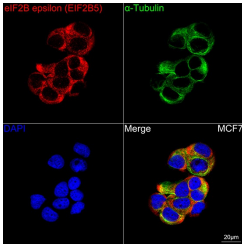
Product Type	Primary antibodies
Short Description	
Applications	WB/IHC-P/IF/ICC/ELISA
Host/Source	Rabbit
Reactivity	Human/Mouse/Rat

PRODUCT PROPERTIES

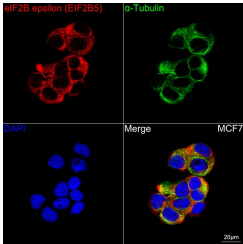
Clonality	Monoclonal
Clone ID	S0MR
Concentration	Lot specific
Conjugation	Unconjugated
Purification	Affinity purification
Dilution Range	WB:1:500-1:2000 IHC-P:1:50-1:200 IF/ICC:1:50-1:200 ELISA:Recommended starting concentration is 1 Mu g/mL. Please optimize the concentration based on your specific assay requirements.
Formulation	PBS with 0.02% Sodium Azide, 0.05% BSA, 50% Glycerol, pH 7.3.
Isotype	IgG
Storage Instruction	Store at -20°C for up to 1 year from the date of receipt, and avoid repeat freeze-thaw cycles.

TARGET INFORMATION

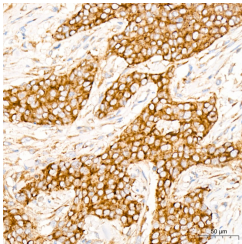
Gene ID	8893
Gene Symbol	EIF2B5
Uniprot ID	E12BE_HUMAN
Immunogen	
Immunogen Region	1-100
Specificity	A synthetic peptide corresponding to a sequence within amino acids 1-100 of human eIF2B epsilon (EIF2B5) (EIF2B5) (Q13144).
Immunogen Sequence	MAAPVVAPPGVVSRANKRS GAGPGSGGGGARGAEEEEPP PPLQAVLVADSFDRFFPIS KDQPRVLLPLANVALIDYTL EFLTATGVQETVFVCCWCAA



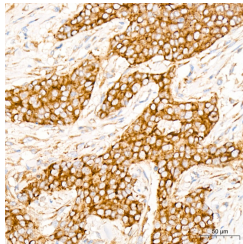
Western blot analysis of extracts of various cell lines, using eIF2B epsilon (EIF2B5) rabbit monoclonal antibody (STJ11102350) at 1:1000 dilution. Secondary antibody: HRP Goat Anti-rabbit IgG (H+L) at 1:10000 dilution. Lysates/proteins: 25ug per lane. Blocking buffer: 3% non-fat dry milk in TBST. Detection: ECL Basic Kit. Exposure time: 3s.



Confocal imaging of MCF7 cells using eIF2B epsilon (EIF2B5) Rabbit monoclonal antibody (STJ11102350, dilution 1:100) followed by a further incubation with Cy3 Goat Anti-Rabbit IgG (H+L) (dilution 1:500) (Red). The cells were counterstained with Alpha-Tubulin Mouse monoclonal antibody (dilution 1:400) followed by incubation with Alexa488-conjugated Goat Anti-Mouse IgG (H+L) antibody (dilution 1:500) (Green). DAPI was used for nuclear staining (Blue). Objective: 100x.



Immunohistochemistry of paraffin-embedded rat brain using eIF2B epsilon (EIF2B5) rabbit monoclonal antibody (STJ11102350) at dilution of 1:100 (40x lens). Perform microwave antigen retrieval with 10 mM Tris/EDTA buffer pH 9.0 before commencing with immunohistochemistry staining protocol.



Immunohistochemistry analysis of eIF2B epsilon (EIF2B5) in paraffin-embedded human breast cancer tissue using eIF2B epsilon (EIF2B5) Rabbit monoclonal antibody (STJ11102350) at a dilution of 1:200 (40x lens). High pressure antigen retrieval was performed with 0.01 M citrate buffer (pH 6.0) prior to immunohistochemistry staining.

This product is suitable for in-vitro studies under the RESEARCH USE ONLY [RUO] licence. This product must not be used as for diagnostic or other medical purposes.
St John's Laboratory Ltd, Knowledge Dock Business Centre, University Way, London, E16 2RD | Tel: 0208 223 3081