

Anti-SEC23A antibody (300-400) [S2MR] (STJ11102342)
STJ11102342

GENERAL INFORMATION

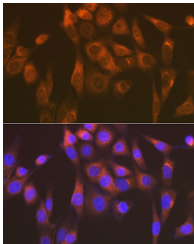
| | |
|--------------------------|--------------------|
| Product Type | Primary antibodies |
| Short Description | |
| Applications | WB/IF/ICC/ELISA |
| Host/Source | Rabbit |
| Reactivity | Human/Mouse/Rat |

PRODUCT PROPERTIES

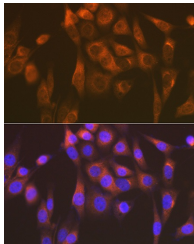
| | |
|----------------------------|---|
| Clonality | Monoclonal |
| Clone ID | S2MR |
| Concentration | Lot specific |
| Conjugation | Unconjugated |
| Purification | Affinity purification |
| Dilution Range | WB:1:500-1:1000 IF/ICC:1:50-1:200 ELISA:Recommended starting concentration is 1 Mu g/mL. Please optimize the concentration based on your specific assay requirements. |
| Formulation | PBS with 0.02% Sodium Azide, 0.05% BSA, 50% Glycerol, pH 7.3. |
| Isotype | IgG |
| Storage Instruction | Store at -20°C for up to 1 year from the date of receipt, and avoid repeat freeze-thaw cycles. |

TARGET INFORMATION

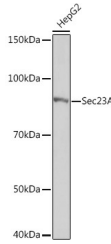
| | |
|---------------------------|--|
| Gene ID | 10484 |
| Gene Symbol | SEC23A |
| Uniprot ID | SC23A_HUMAN |
| Immunogen | |
| Immunogen Region | 300-400 |
| Specificity | Recombinant fusion protein containing a sequence corresponding to amino acids 300-400 of human Sec23AA (Q15436). |
| Immunogen Sequence | MVVGDELKTPIRSWHDIDKD NAKYVKKGTKHFEALANRAA TTGHVIDIYACALDQTGLLE MKCCPNLTGGYMMVMDGSFNT SLFKQTFQVRVTKDMHGQFK M |



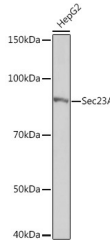
Western blot analysis of extracts of HepG2 cells, using Sec23AA rabbit monoclonal antibody (STJ11102342) at 1:1000 dilution. Secondary antibody: HRP Goat Anti-rabbit IgG (H+L) at 1:10000 dilution. Lysates/proteins: 25ug per lane. Blocking buffer: 3% non-fat dry milk in TBST. Detection: ECL Basic Kit. Exposure time: 1s.



Immunofluorescence analysis of NIH/3T3 cells using Sec23AA Rabbit monoclonal antibody (STJ11102342) at dilution of 1:100 (40x lens). Blue: DAPI for nuclear staining.



Immunohistochemistry of paraffin-embedded rat ovary using Sec23AA rabbit monoclonal antibody (STJ11102342) at dilution of 1:100 (40x lens). Perform microwave antigen retrieval with 10 mM Tris/EDTA buffer pH 9.0 before commencing with immunohistochemistry staining protocol.



Western blot analysis of extracts of Hep G2 cells, using Sec23AA Rabbit monoclonal antibody (STJ11102342) at 1:1000 dilution. Secondary antibody: HRP Goat Anti-Rabbit IgG (H+L) (STJS000858) at 1:10000 dilution. Lysates/proteins: 25 Mu g per lane. Blocking buffer: 3% nonfat dry milk in TBST. Detection: ECL Basic Kit. Exposure time: 1s.

This product is suitable for in-vitro studies under the RESEARCH USE ONLY [RUO] licence. This product must not be used as for diagnostic or other medical purposes.
St John's Laboratory Ltd, Knowledge Dock Business Centre, University Way, London, E16 2RD | Tel: 0208 223 3081