

Anti-MOV10 antibody (800-900) [S5MR] (STJ11102335)
STJ11102335

GENERAL INFORMATION

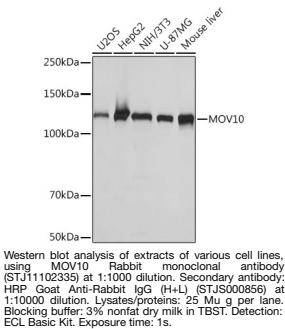
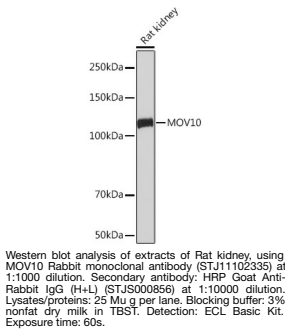
Product Type	Primary antibodies
Short Description	
Applications	WB/ELISA
Host/Source	Rabbit
Reactivity	Human/Mouse/Rat

PRODUCT PROPERTIES

Clonality	Monoclonal
Clone ID	S5MR
Concentration	Lot specific
Conjugation	Unconjugated
Purification	Affinity purification
Dilution Range	WB:1:500-1:1000 ELISA:Recommended starting concentration is 1 Mu g/mL. Please optimize the concentration based on your specific assay requirements.
Formulation	PBS with 0.02% Sodium Azide, 0.05% BSA, 50% Glycerol, pH 7.3.
Isotype	IgG
Storage Instruction	Store at -20°C for up to 1 year from the date of receipt, and avoid repeat freeze-thaw cycles.

TARGET INFORMATION

Gene ID	4343
Gene Symbol	MOV10
Uniprot ID	MOV10_HUMAN
Immunogen	
Immunogen Region	800-900
Specificity	A synthetic peptide corresponding to a sequence within amino acids 800-900 of human MOV10 (Q9HCE1).
Immunogen Sequence	AATVTSYLKLLAPSSKKGK ARLSPRSVGVISPYRKQVEK IRYCITKLDRELRLGLDDIKD LKVGSVVEEFQGGQERSVILIS TVRSSQSFVQLDLDFNLGFL K



This product is suitable for in-vitro studies under the RESEARCH USE ONLY [RUO] licence. This product must not be used as for diagnostic or other medical purposes.
St John's Laboratory Ltd, Knowledge Dock Business Centre, University Way, London, E16 2RD | Tel: 0208 223 3081