

## Anti-PHOX2B antibody (215-314) [S6MR] (STJ11102326)

STJ11102326

### GENERAL INFORMATION

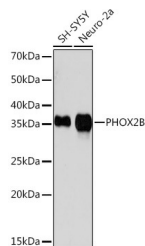
<b>Product Type</b>	Primary antibodies
<b>Short Description</b>	
<b>Applications</b>	WB/ELISA
<b>Host/Source</b>	Rabbit
<b>Reactivity</b>	Human/Mouse

### PRODUCT PROPERTIES

<b>Clonality</b>	Monoclonal
<b>Clone ID</b>	S6MR
<b>Concentration</b>	Lot specific
<b>Conjugation</b>	Unconjugated
<b>Purification</b>	Affinity purification
<b>Dilution Range</b>	WB:1:500-1:1000 ELISA:Recommended starting concentration is 1 Mu g/mL. Please optimize the concentration based on your specific assay requirements.
<b>Formulation</b>	PBS with 0.02% Sodium Azide, 0.05% BSA, 50% Glycerol, pH 7.3.
<b>Isotype</b>	IgG
<b>Storage</b>	Store at -20°C for up to 1 year from the date of receipt, and avoid repeat freeze-thaw cycles.
<b>Instruction</b>	

### TARGET INFORMATION

<b>Gene ID</b>	8929
<b>Gene Symbol</b>	PHOX2B
<b>Uniprot ID</b>	PHX2B_HUMAN
<b>Immunogen</b>	
<b>Region</b>	215-314
<b>Specificity</b>	A synthetic peptide corresponding to a sequence within amino acids 215-314 of human PHOX2B (NP_003915.2).
<b>Immunogen Sequence</b>	GGGPSPAGAPGAAGPGGPGG EPGKGGAAAAAAAAAAAAAAAA AAAAAAGGLAAAGPGQGWA PGPGPITSIPDSLGGPFASV LSSLQRPNGAKAALVKSSMF



Western blot analysis of extracts of various cell lines, using PHOX2B Rabbit monoclonal antibody (STJ11102326) at 1:1000 dilution. Secondary antibody: HRP Goat Anti-Rabbit IgG (H+L) (STJSD00856) at 1:10000 dilution. Lysates/proteins: 25 Mu g per lane. Blocking buffer: 3% nonfat dry milk in TBST. Detection: ECL Basic Kit. Exposure time: 3min.

This product is suitable for in-vitro studies under the RESEARCH USE ONLY [RUO] licence. This product must not be used as for diagnostic or other medical purposes.  
St John's Laboratory Ltd, Knowledge Dock Business Centre, University Way, London, E16 2RD | Tel: 0208 223 3081