

Anti-LALBA antibody (20-142) (STJ11102319)

STJ11102319

GENERAL INFORMATION

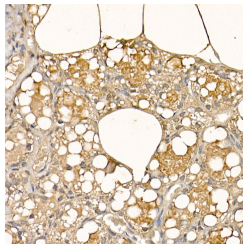
Product Type	Primary antibodies
Short Description	
Applications	WB/IHC-P/ELISA
Host/Source	Rabbit
Reactivity	Mouse/Rat

PRODUCT PROPERTIES

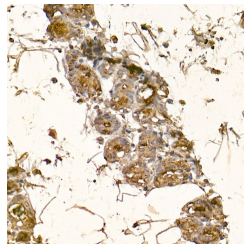
Clonality	Polyclonal
Clone ID	
Concentration	Lot specific
Conjugation	Unconjugated
Purification	Affinity purification
Dilution Range	WB:1:500-1:2000 IHC-P:1:50-1:200 ELISA:Recommended starting concentration is 1 µg/mL. Please optimize the concentration based on your specific assay requirements.
Formulation	PBS with 0.02% Sodium Azide, 50% Glycerol, pH 7.3.
Isotype	IgG
Storage Instruction	Store at -20°C for up to 1 year from the date of receipt, and avoid repeat freeze-thaw cycles.

TARGET INFORMATION

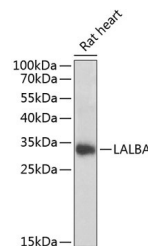
Gene ID	3906
Gene Symbol	LALBA
Uniprot ID	LALBA_HUMAN
Immunogen	
Immunogen Region	20-142
Specificity	Recombinant fusion protein containing a sequence corresponding to amino acids 20-142 of human LALBA (NP_002280.1).
Immunogen Sequence	KQFTKCELSQLLKIDIDGYGG IALPELICTMFHTSGYDTQA IVENNESTEYGLFQISNKLW CKSSQVPQSRNICDISCDF LDDDTDDIMCAKKILDIKG IDYWLAKKALCTEKLQWLC EKL



Immunohistochemistry analysis of LALBA in paraffin-embedded rat breast using LALBA Rabbit polyclonal antibody (STJ11102319) at dilution of 1:100 (40x lens). Perform high pressure antigen retrieval with 10 mM citrate buffer pH 6.0 before commencing with immunohistochemistry staining protocol.



Immunohistochemistry analysis of LALBA in paraffin-embedded mouse breast using LALBA Rabbit polyclonal antibody (STJ11102319) at dilution of 1:100 (40x lens). Perform high pressure antigen retrieval with 10 mM citrate buffer pH 6.0 before commencing with immunohistochemistry staining protocol.



Western blot analysis of lysates from rat heart, using LALBA Rabbit polyclonal antibody (STJ11102319) at 1:1000 dilution. Secondary antibody: HRP Goat Anti-Rabbit IgG (H+L) (STJS000856) at 1:10000 dilution. Lysates/proteins: 25 µg per lane. Blocking buffer: 3% nonfat dry milk in TBST. Detection: ECL Basic Kit. Exposure time: 60s.

This product is suitable for in-vitro studies under the RESEARCH USE ONLY [RUO] licence. This product must not be used as for diagnostic or other medical purposes.
St John's Laboratory Ltd, Knowledge Dock Business Centre, University Way, London, E16 2RD | Tel: 0208 223 3081