

Anti-DLD antibody (401-500) [S0MR] (STJ11102300)
STJ11102300

GENERAL INFORMATION

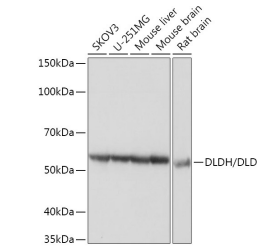
Product Type	Primary antibodies
Short Description	
Applications	WB/IHC-P/IF/ICC/ELISA
Host/Source	Rabbit
Reactivity	Human/Mouse/Rat

PRODUCT PROPERTIES

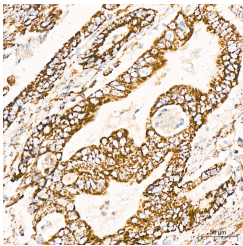
Clonality	Monoclonal
Clone ID	S0MR
Concentration	Lot specific
Conjugation	Unconjugated
Purification	Affinity purification
Dilution Range	WB:1:500-1:1000 IHC-P:1:50-1:200 IF/ICC:1:50-1:200 ELISA:Recommended starting concentration is 1 Mu g/mL. Please optimize the concentration based on your specific assay requirements.
Formulation	PBS with 0.02% Sodium Azide, 0.05% BSA, 50% Glycerol, pH 7.3.
Isotype	IgG
Storage Instruction	Store at -20°C for up to 1 year from the date of receipt, and avoid repeat freeze-thaw cycles.

TARGET INFORMATION

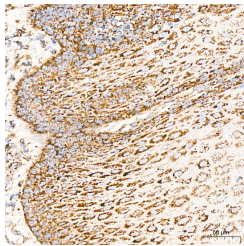
Gene ID	1738
Gene Symbol	DLD
Uniprot ID	DLDH_HUMAN
Immunogen	
Immunogen Region	401-500
Specificity	Recombinant fusion protein containing a sequence corresponding to amino acids 401-500 of human DLDH/DLD (P09622).
Immunogen Sequence	WVGKSEELKEEGIEYKVGK FPFANSRAKTNADTGMVK ILGQKSTDRVLGAHILGPGA GEMVNEAALALEYGASCEI ARVCHAHTLSEAFREANLA



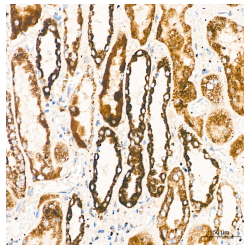
Western blot analysis of extracts of various cell lines, using DLDH/DLD rabbit monoclonal antibody (STJ11102300) at 1:3000 dilution. Secondary antibody: HRP Goat Anti-rabbit IgG (H+L) (STJS000856) at 1:10000 dilution. Lysates/proteins: 25 Mu g per lane. Blocking buffer: 3% non-fat dry milk in TBST. Detection: ECL Basic Kit. Exposure time: 1s.



Immunohistochemistry analysis of DLDH/DLD in paraffin-embedded human colon carcinoma tissue using DLDH/DLD rabbit monoclonal antibody (STJ11102300) at a dilution of 1:200 (40x lens). High pressure antigen retrieval was performed with 0.01 M citrate buffer (pH 6.0) prior to immunohistochemistry staining.



Immunohistochemistry analysis of DLDH/DLD in paraffin-embedded human esophagus tissue using DLDH/DLD rabbit monoclonal antibody (STJ11102300) at a dilution of 1:200 (40x lens). High pressure antigen retrieval was performed with 0.01 M citrate buffer (pH 6.0) prior to immunohistochemistry staining.



Immunohistochemistry analysis of DLDH/DLD in paraffin-embedded human kidney tissue using DLDH/DLD rabbit monoclonal antibody (STJ11102300) at a dilution of 1:200 (40x lens). High pressure antigen retrieval was performed with 0.01 M citrate buffer (pH 6.0) prior to immunohistochemistry staining.

This product is suitable for in-vitro studies under the RESEARCH USE ONLY [RUO] licence. This product must not be used as for diagnostic or other medical purposes.
St John's Laboratory Ltd, Knowledge Dock Business Centre, University Way, London, E16 2RD | Tel: 0208 223 3081