

Anti-TEAD1 antibody (1-100) [S8MR] (STJ11102298)
STJ11102298

GENERAL INFORMATION

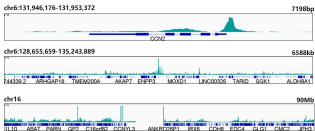
Product Type	Primary antibodies
Short Description	
Applications	WB/IP/ELISA/ChIP/CUT&Tag
Host/Source	Rabbit
Reactivity	Human/Mouse/Rat

PRODUCT PROPERTIES

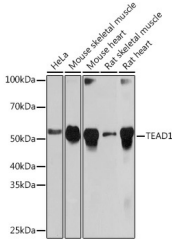
Clonality	Monoclonal
Clone ID	S8MR
Concentration	Lot specific
Conjugation	Unconjugated
Purification	Affinity purification
Dilution Range	WB:1:500-1:2000 IP:0.5 Mu g-4 Mu g antibody for 400 Mu g-600 Mu g extracts of whole cells ELISA:Recommended starting concentration is 1 Mu g/mL. Please optimize the concentration based on your specific assay requirements. ChIP:5 Mu g anti
Formulation	PBS with 0.02% Sodium Azide, 0.05% BSA, 50% Glycerol, pH 7.3.
Isotype	IgG
Storage Instruction	Store at-20°C for up to 1 year from the date of receipt, and avoid repeat freeze-thaw cycles.

TARGET INFORMATION

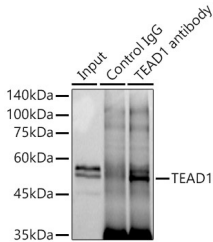
Gene ID	7003
Gene Symbol	TEAD1
Uniprot ID	TEAD1_HUMAN
Immunogen	
Immunogen Region	1-100
Specificity	A synthetic peptide corresponding to a sequence within amino acids 1-100 of human TEAD1 (P28347).
Immunogen Sequence	MEPSSWSGSESPAENMERMS DSADKPIDNDAEGVWSPDIE QSFQEALAIYPPCGRRKIIL SDEGKMYGRNELIARYIKLR TGKTRTRKQVSSHQVLARR



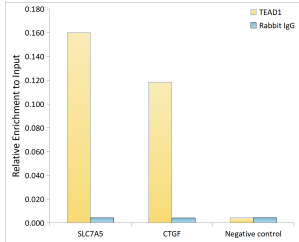
CUT&Tag was performed using the CUT&Tag Assay Kit (pAG-Tn5) for Illumina (RK20265) from 10⁶ Hep G2 cells with 1 Mu g TEAD1 rabbit monoclonal antibody (STJ11102298) along with a Goat Anti-rabbit IgG (H+L). The CUT&Tag results indicate the enrichment pattern of TEAD1 in representative gene loci (SLC7A5), as shown in figure.



Western blot analysis of extracts of various cell lines, using TEAD1 rabbit monoclonal antibody (STJ11102298) at 1:1000 dilution. Secondary antibody: HRP Goat Anti-rabbit IgG (H+L) (STJS000856) at 1:10000 dilution. Lysates/proteins: 25 Mu g per lane. Blocking buffer: 3% non-fat dry milk in TBST. Detection: ECL Basic Kit. Exposure time: 10s.



Immunoprecipitation analysis of 600 Mu g extracts of mouse skeletal muscle cells using 3 Mu g TEAD1 antibody (STJ11102298). Western blot was performed from the immunoprecipitate using TEAD1 antibody (STJ11102298) at a dilution of 1:1000.



Chromatin immunoprecipitation analysis of extracts of HepG2 cells, using TEAD1 antibody (STJ11102298) and rabbit IgG. The amount of immunoprecipitated DNA was checked by quantitative PCR. Histogram was constructed by the ratios of the immunoprecipitated DNA to the input.

This product is suitable for in-vitro studies under the RESEARCH USE ONLY [RUO] licence. This product must not be used as for diagnostic or other medical purposes.
St John's Laboratory Ltd, Knowledge Dock Business Centre, University Way, London, E16 2RD | Tel: 0208 223 3081