

Anti-KIFAP3 antibody (675-792) [S7MR] (STJ11102297)

STJ11102297

GENERAL INFORMATION

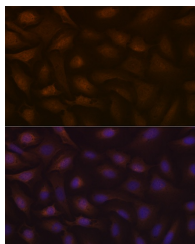
Product Type	Primary antibodies
Short Description	
Applications	WB/IF/ICC/ELISA
Host/Source	Rabbit
Reactivity	Human/Mouse/Rat

PRODUCT PROPERTIES

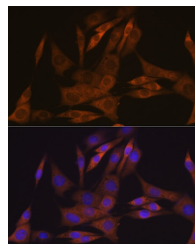
Clonality	Monoclonal
Clone ID	S7MR
Concentration	Lot specific
Conjugation	Unconjugated
Purification	Affinity purification
Dilution Range	WB:1:500-1:1000 IF/ICC:1:50-1:200 ELISA:Recommended starting concentration is 1 Mu g/mL. Please optimize the concentration based on your specific assay requirements.
Formulation	PBS with 0.02% Sodium Azide, 0.05% BSA, 50% Glycerol, pH 7.3.
Isotype	IgG
Storage Instruction	Store at -20°C for up to 1 year from the date of receipt, and avoid repeat freeze-thaw cycles.

TARGET INFORMATION

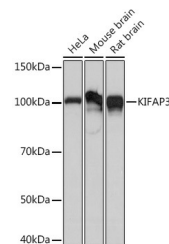
Gene ID	22920
Gene Symbol	KIFAP3
Uniprot ID	KIFA3_HUMAN
Immunogen	
Immunogen Region	675-792
Specificity	Recombinant fusion protein containing a sequence corresponding to amino acids 675-792 of human KIFAP3 (Q92845).
Immunogen Sequence	KFRWHNSQWLEMVESRQMDSEQYLYGDDRIEPIYIEGDI LERPDLFYNSDGLIASEGAI SPDFNDYHLQNGDVVGQHS FPGSLGMDGFGQPVGILGRP ATAYGFRPDEPYYYGYGS



Immunofluorescence analysis of U-2 OS cells using KIFAP3 Rabbit monoclonal antibody (STJ11102297) at dilution of 1:100 (40x lens). Blue: DAPI for nuclear staining.



Immunofluorescence analysis of NIH-3T3 cells using KIFAP3 Rabbit monoclonal antibody (STJ11102297) at dilution of 1:100 (40x lens). Blue: DAPI for nuclear staining.



Western blot analysis of extracts of various cell lines, using KIFAP3 Rabbit monoclonal antibody (STJ11102297) at 1:1000 dilution. Secondary antibody: HRP Goat Anti-Rabbit IgG (H+L) (STJS000856) at 1:10000 dilution. Lysates/proteins: 25 Mu g per lane. Blocking buffer: 3% nonfat dry milk in TBST. Detection: ECL Basic Kit. Exposure time: 3s.