

Anti-PTGES3 antibody (1-100) [S9MR] (STJ11102289)
STJ11102289

GENERAL INFORMATION

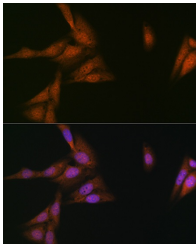
Product Type	Primary antibodies
Short Description	
Applications	WB/IF/ICC/ELISA
Host/Source	Rabbit
Reactivity	Human/Mouse/Rat

PRODUCT PROPERTIES

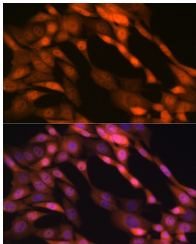
Clonality	Monoclonal
Clone ID	S9MR
Concentration	Lot specific
Conjugation	Unconjugated
Purification	Affinity purification
Dilution Range	WB:1:1000-1:5000 IF/ICC:1:50-1:200 ELISA:Recommended starting concentration is 1 Mu g/mL. Please optimize the concentration based on your specific assay requirements.
Formulation	PBS with 0.02% Sodium Azide, 0.05% BSA, 50% Glycerol, pH 7.3.
Isotype	IgG
Storage Instruction	Store at -20°C for up to 1 year from the date of receipt, and avoid repeat freeze-thaw cycles.

TARGET INFORMATION

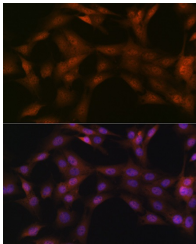
Gene ID	10728
Gene Symbol	PTGES3
Uniprot ID	TEBP_HUMAN
Immunogen	
Immunogen Region	1-100
Specificity	A synthetic peptide corresponding to a sequence within amino acids 1-100 of human P23/PTGES3 (NP_006592.3).
Immunogen Sequence	MQPASAKWYDRRDYVFIEFC VEDSKDVNVNFEKSKLTFSC LGGSDNFKHLNEIDLFHCID PNDSKHKRTDRSILCCLRKG ESGQSWPRLTKERAKLNWLS



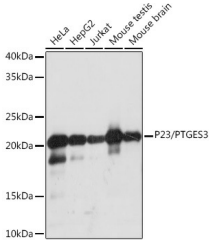
Immunofluorescence analysis of U-2 OS cells using P23/PTGES3 Rabbit monoclonal antibody (STJ11102289) at dilution of 1:100 (40x lens). Blue: DAPI for nuclear staining.



Immunofluorescence analysis of NIH-3T3 cells using P23/PTGES3 Rabbit monoclonal antibody (STJ11102289) at dilution of 1:100 (40x lens). Blue: DAPI for nuclear staining.



Immunofluorescence analysis of C6 cells using P23/PTGES3 Rabbit monoclonal antibody (STJ11102289) at dilution of 1:100 (40x lens). Blue: DAPI for nuclear staining.



This product is suitable for in-vitro studies under the RESEARCH USE ONLY [RUO] licence. This product must not be used as for diagnostic or other medical purposes.
St John's Laboratory Ltd, Knowledge Dock Business Centre, University Way, London, E16 2RD | Tel: 0208 223 3081