

Anti-IGF2BP2 antibody (500-595) [S8MR] (STJ11102288)

STJ11102288

GENERAL INFORMATION

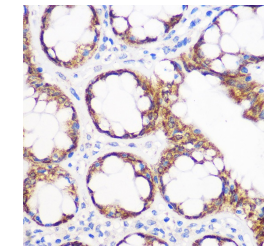
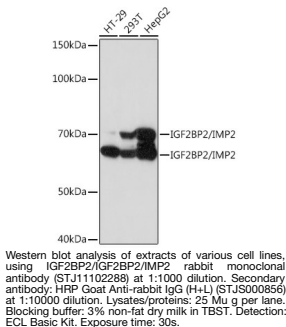
Product Type	Primary antibodies
Short Description	
Applications	WB/IHC-P/IP/ELISA
Host/Source	Rabbit
Reactivity	Human

PRODUCT PROPERTIES

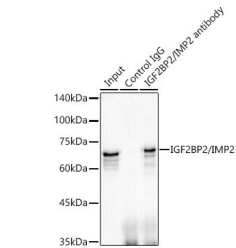
Clonality	Monoclonal
Clone ID	S8MR
Concentration	Lot specific
Conjugation	Unconjugated
Purification	Affinity purification
Dilution Range	WB:1:1000-1:4000 IHC-P:1:100-1:1000 IP:0.5 Mu g-4 Mu g antibody for 200 Mu g-400 Mu g extracts of whole cells ELISA:Recommended starting concentration is 1 Mu g/mL. Please optimize the concentration based on your specific assay requiremen
Formulation	PBS with 0.02% Sodium Azide, 0.05% BSA, 50% Glycerol, pH 7.3.
Isotype	IgG
Storage Instruction	Store at -20°C for up to 1 year from the date of receipt, and avoid repeat freeze-thaw cycles.

TARGET INFORMATION

Gene ID	10644
Gene Symbol	IGF2BP2
Uniprot ID	IF2B2_HUMAN
Immunogen	
Immunogen Region	500-595
Specificity	Recombinant fusion protein containing a sequence corresponding to amino acids 500-595 of human IGF2BP2/IMP2 (NP_001007226.1).
Immunogen Sequence	NFFNPKEEVKLEAHIRVPSS TAGRVIGKGGKTVNELQNLT SAEVIVPRDQTPDENEEVIV RIIGHFFASQTAQRKIREIV QQVKQEQEKYPQGVAS



Immunohistochemistry analysis of paraffin-embedded human colon using IGF2BP2/IMP2 rabbit monoclonal antibody (STJ11102288) at dilution of 1:100 (40x lens). Perform microwave antigen retrieval with 10 mM Tris/EDTA buffer pH 9.0 before commencing with immunohistochemistry staining protocol.



Immunoprecipitation analysis of 300 Mu g extracts of HepG2 cells using 3 Mu g IGF2BP2/IMP2 antibody (STJ11102288). Western blot was performed from the immunoprecipitate using IGF2BP2/IMP2 antibody (STJ11102288) at a dilution of 1:1000.

This product is suitable for in-vitro studies under the RESEARCH USE ONLY [RUO] licence. This product must not be used as for diagnostic or other medical purposes.
St John's Laboratory Ltd, Knowledge Dock Business Centre, University Way, London, E16 2RD | Tel: 0208 223 3081