

Anti-WIF1 antibody (280-379) [S2MR] (STJ11102282)

STJ11102282

GENERAL INFORMATION

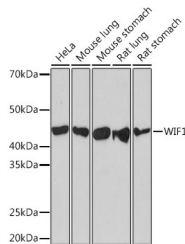
Product Type	Primary antibodies
Short Description	
Applications	WB/ELISA
Host/Source	Rabbit
Reactivity	Human/Mouse/Rat

PRODUCT PROPERTIES

Clonality	Monoclonal
Clone ID	S2MR
Concentration	Lot specific
Conjugation	Unconjugated
Purification	Affinity purification
Dilution Range	WB:1:500-1:1000 ELISA:Recommended starting concentration is 1 Mu g/mL. Please optimize the concentration based on your specific assay requirements.
Formulation	PBS with 0.02% Sodium Azide, 0.05% BSA, 50% Glycerol, pH 7.3.
Isotype	IgG
Storage	Store at -20°C for up to 1 year from the date of receipt, and avoid repeat freeze-thaw cycles.
Instruction	

TARGET INFORMATION

Gene ID	11197
Gene Symbol	WIF1
Uniprot ID	WIF1_HUMAN
Immunogen	
Immunogen Region	280-379
Specificity	A synthetic peptide corresponding to a sequence within amino acids 280-379 of human WIF1 (Q9Y5W5).
Immunogen Sequence	QPCRNGGKCIQKSKCKCSKG YQDLCSPVCEPGCGAHGT CHEPNKCQCQEGWHGRHCNK RYEASLIHALRPAGAQLRQH TPSLKKAEEERDPPESENYIW



Western blot analysis of extracts of various cell lines, using WIF1 Rabbit monoclonal antibody (STJ11102282) at 1:1000 dilution. Secondary antibody: HRP Goat Anti-Rabbit IgG (H+L) (STJ5000858) at 1:10000 dilution. Lysates/proteins: 25 Mu g per lane. Blocking buffer: 3% nonfat dry milk in TBST. Detection: ECL Basic Kit. Exposure time: 3min.

This product is suitable for in-vitro studies under the RESEARCH USE ONLY [RUO] licence. This product must not be used as for diagnostic or other medical purposes.
St John's Laboratory Ltd, Knowledge Dock Business Centre, University Way, London, E16 2RD | Tel: 0208 223 3081