

Anti-CHRM2 antibody (100-200) [S7MR] (STJ11102277)
STJ11102277

GENERAL INFORMATION

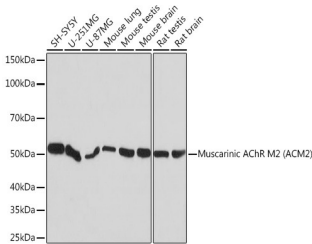
Product Type	Primary antibodies
Short Description	
Applications	WB/IHC-P/ELISA
Host/Source	Rabbit
Reactivity	Human/Mouse/Rat

PRODUCT PROPERTIES

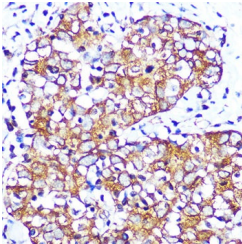
Clonality	Monoclonal
Clone ID	S7MR
Concentration	Lot specific
Conjugation	Unconjugated
Purification	Affinity purification
Dilution Range	WB:1:1000-1:6000 IHC-P:1:200-1:2000 ELISA:Recommended starting concentration is 1 Mu g/mL. Please optimize the concentration based on your specific assay requirements.
Formulation	PBS with 0.02% Sodium Azide, 0.05% BSA, 50% Glycerol, pH 7.3.
Isotype	IgG
Storage Instruction	Store at -20°C for up to 1 year from the date of receipt, and avoid repeat freeze-thaw cycles.

TARGET INFORMATION

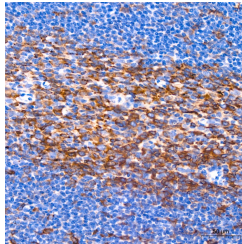
Gene ID	1129
Gene Symbol	CHRM2
Uniprot ID	ACM2_HUMAN
Immunogen	
Immunogen Region	100-200
Specificity	A synthetic peptide corresponding to a sequence within amino acids 100-200 of human Muscarinic AChR M2 (ACM2) (P08172). LALDYVVSNAVMNLLIISF DRYFCVTKPLTYPVKRTTKM AGMMIAAAWVLSFILWAPAI LFWQFIVGVRTVEDGECYIQ
Immunogen Sequence	FFSNAAVTFGTAIAAFYLPV I



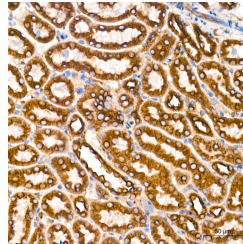
Western blot analysis of extracts of various cell lines, using Muscarinic AChR M2 (Muscarinic AChR M2 (ACM2)) rabbit monoclonal antibody (STJ11102277) at 1:1000 dilution. Secondary antibody: HRP Goat Anti-rabbit IgG (H+L) (STJS000856) at 1:10000 dilution. Lysates/proteins: 25 Mu g per lane. Blocking buffer: 3% non-fat dry milk in TBST. Detection: ECL Basic Kit. Exposure time: 10s.



Immunohistochemistry analysis of paraffin-embedded human esophageal cancer using Muscarinic AChR M2 (Muscarinic AChR M2 (ACM2)) rabbit monoclonal antibody (STJ11102277) at a dilution of 1:100 (40x lens). Perform microwave antigen retrieval with 10 mM PBS buffer pH 7.2 before commencing with immunohistochemistry staining protocol.



Immunohistochemistry analysis of Muscarinic AChR M2 (ACM2) in paraffin-embedded human tonsil tissue using Muscarinic AChR M2 (ACM2) rabbit monoclonal antibody (STJ11102277) at a dilution of 1:200 (40x lens). High pressure antigen retrieval was performed with 0.01 M citrate buffer (pH 6.0) prior to immunohistochemistry staining.



Immunohistochemistry analysis of Muscarinic AChR M2 (ACM2) in paraffin-embedded mouse kidney tissue using Muscarinic AChR M2 (ACM2) rabbit monoclonal antibody (STJ11102277) at a dilution of 1:200 (40x lens). High pressure antigen retrieval was performed with 0.01 M citrate buffer (pH 6.0) prior to immunohistochemistry staining.

This product is suitable for in-vitro studies under the RESEARCH USE ONLY [RUO] licence. This product must not be used as for diagnostic or other medical purposes.
St John's Laboratory Ltd, Knowledge Dock Business Centre, University Way, London, E16 2RD | Tel: 0208 223 3081