

Anti-PVR antibody (250-350) [S1MR] (STJ11102271)

STJ11102271

GENERAL INFORMATION

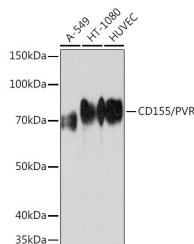
Product Type	Primary antibodies
Short Description	
Applications	WB/ELISA
Host/Source	Rabbit
Reactivity	Human

PRODUCT PROPERTIES

Clonality	Monoclonal
Clone ID	S1MR
Concentration	Lot specific
Conjugation	Unconjugated
Purification	Affinity purification
Dilution Range	WB:1:500-1:2000 ELISA:Recommended starting concentration is 1 Mu g/mL. Please optimize the concentration based on your specific assay requirements.
Formulation	PBS with 0.02% Sodium Azide, 0.05% BSA, 50% Glycerol, pH 7.3.
Isotype	IgG
Storage	Store at -20°C for up to 1 year from the date of receipt, and avoid repeat freeze-thaw cycles.
Instruction	

TARGET INFORMATION

Gene ID	5817
Gene Symbol	PVR
Uniprot ID	PVR_HUMAN
Immunogen	
Immunogen	250-350
Region	
Specificity	A synthetic peptide corresponding to a sequence within amino acids 250-350 of human CD155/PVR (P15151).
Immunogen	GYDNNWYLGQNEATLTCDAR SNPEPTGYNWSTTMGGLPPF AVAQGAQLLIRPVDKPINTT LICNVTNALGARQAELTVQV
Sequence	KEGPPSEHSGISRNIIFLV L



Western blot analysis of extracts of various cell lines, using CD155/PVR Rabbit monoclonal antibody (STJ11102271) at 1:1000 dilution. Secondary antibody: HRP Goat Anti-Rabbit IgG (H+L) (STJS000856) at 1:10000 dilution. Lysates/proteins: 25 Mu g per lane. Blocking buffer: 3% nonfat dry milk in TBST. Detection: ECL Basic Kit. Exposure time: 3min.

This product is suitable for in-vitro studies under the RESEARCH USE ONLY [RUO] licence. This product must not be used as for diagnostic or other medical purposes.
St John's Laboratory Ltd, Knowledge Dock Business Centre, University Way, London, E16 2RD | Tel: 0208 223 3081