

## Anti-LDHB antibody (1-100) [S7MR] (STJ11102267)

STJ11102267

### GENERAL INFORMATION

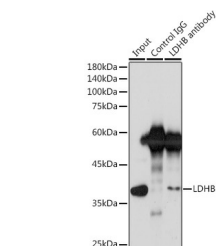
<b>Product Type</b>	Primary antibodies
<b>Short Description</b>	
<b>Applications</b>	WB/IHC-P/IP/ELISA
<b>Host/Source</b>	Rabbit
<b>Reactivity</b>	Human/Rat

### PRODUCT PROPERTIES

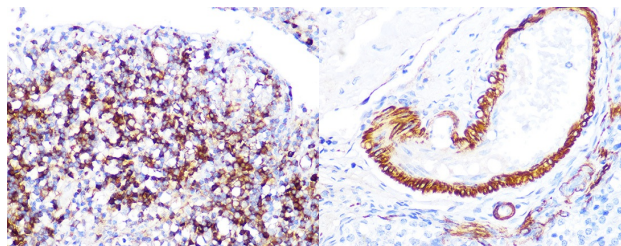
<b>Clonality</b>	Monoclonal
<b>Clone ID</b>	S7MR
<b>Concentration</b>	Lot specific
<b>Conjugation</b>	Unconjugated
<b>Purification</b>	Affinity purification
<b>Dilution Range</b>	WB:1:500-1:2000 IHC-P:1:50-1:200 IP:0.5 Mu g-4 Mu g antibody for 200 Mu g-400 Mu g extracts of whole cells ELISA:Recommended starting concentration is 1 Mu g/mL. Please optimize the concentration based on your specific assay requirements.
<b>Formulation</b>	PBS with 0.02% Sodium Azide, 0.05% BSA, 50% Glycerol, pH 7.3.
<b>Isotype</b>	IgG
<b>Storage Instruction</b>	Store at -20°C for up to 1 year from the date of receipt, and avoid repeat freeze-thaw cycles.

### TARGET INFORMATION

<b>Gene ID</b>	3945
<b>Gene Symbol</b>	LDHB
<b>Uniprot ID</b>	LDHB_HUMAN
<b>Immunogen</b>	
<b>Immunogen Region</b>	1-100
<b>Specificity</b>	A synthetic peptide corresponding to a sequence within amino acids 1-100 of human LDHB (P07195).
<b>Immunogen Sequence</b>	MATLKEKLIAPVAEEETVP NNKITVVGVGQVGMACAISI LGKSLADELALVDVLEDKLK GEMMDLQHGSFLQTPKIVA DKDYSVTANSKIVVTAGVR

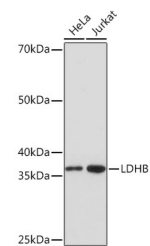


Immunoprecipitation analysis of 300 Mu g extracts of Jurkat cells using 3 Mu g LDHB antibody (STJ11102267). Western blot was performed from the immunoprecipitate using LDHB antibody (STJ11102267) at a dilution of 1:1000.



Immunohistochemistry analysis of LDHB in paraffin-embedded human appendix using LDHB Rabbit monoclonal antibody (STJ11102267) at dilution of 1:100 (40x lens). Perform microwave antigen retrieval with 10 mM PBS buffer pH 7.2 before commencing with immunohistochemistry staining protocol.

Immunohistochemistry analysis of LDHB in paraffin-embedded rat ovary using LDHB Rabbit monoclonal antibody (STJ11102267) at dilution of 1:100 (40x lens). Perform microwave antigen retrieval with 10 mM PBS buffer pH 7.2 before commencing with immunohistochemistry staining protocol.



Western blot analysis of various lysates using LDHB Rabbit monoclonal antibody (STJ11102267) at 1:1000 dilution. Secondary antibody: HRP Goat Anti-Rabbit IgG (H+L) (STJS000856) at 1:10000 dilution. Lysates/proteins: 25 Mu g per lane. Blocking buffer: 3% nonfat dry milk in TBST. Detection: ECL Basic Kit. Exposure time: 5s.

This product is suitable for in-vitro studies under the RESEARCH USE ONLY [RUO] licence. This product must not be used as for diagnostic or other medical purposes.  
St John's Laboratory Ltd, Knowledge Dock Business Centre, University Way, London, E16 2RD | Tel: 0208 223 3081