

Anti-TSC1 antibody (1065-1164) [S3MR] (STJ11102263)

STJ11102263

GENERAL INFORMATION

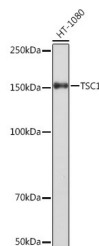
Product Type	Primary antibodies
Short Description	
Applications	WB/ELISA
Host/Source	Rabbit
Reactivity	Human

PRODUCT PROPERTIES

Clonality	Monoclonal
Clone ID	S3MR
Concentration	Lot specific
Conjugation	Unconjugated
Purification	Affinity purification
Dilution Range	WB:1:500-1:1000 ELISA:Recommended starting concentration is 1 Mu g/mL. Please optimize the concentration based on your specific assay requirements.
Formulation	PBS with 0.02% Sodium Azide, 0.05% BSA, 50% Glycerol, pH 7.3.
Isotype	IgG
Storage	Store at -20°C for up to 1 year from the date of receipt, and avoid repeat freeze-thaw cycles.
Instruction	

TARGET INFORMATION

Gene ID	7248
Gene Symbol	TSC1
Uniprot ID	TSC1_HUMAN
Immunogen	
Immunogen Region	1065-1164
Specificity	A synthetic peptide corresponding to a sequence within amino acids 1065-1164 of human Hamartin (Q92574).
Immunogen Sequence	TTMGEASASIPPTVGSLPSS KSFLGMKARELFRNKSESQC DEDGMTSSLSESLKTELGKD LGVEAKIPLNLDGPHSPPT PDSVQLHIMDYNETHHEHS



Western blot analysis of extracts of HT-1080 cells, using TSC1 Rabbit monoclonal antibody (STJ11102263) at 1:1000 dilution. Secondary antibody: HRP Goat Anti-Rabbit IgG (H+L) (STJS000858) at 1:10000 dilution. Lysates/proteins: 25 Mu g per lane. Blocking buffer: 3% nonfat dry milk in TBST. Detection: ECL Enhanced Kit. Exposure time: 3min.

This product is suitable for in-vitro studies under the RESEARCH USE ONLY [RUO] licence. This product must not be used as for diagnostic or other medical purposes.
St John's Laboratory Ltd, Knowledge Dock Business Centre, University Way, London, E16 2RD | Tel: 0208 223 3081