

**Anti-PA2G4 antibody (300-394) [S9MR] (STJ11102259)**  
STJ11102259

**GENERAL INFORMATION**

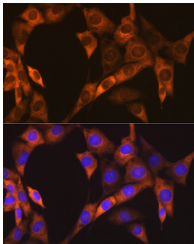
<b>Product Type</b>	Primary antibodies
<b>Short Description</b>	
<b>Applications</b>	WB/IHC-P/IF/ICC/ELISA
<b>Host/Source</b>	Rabbit
<b>Reactivity</b>	Human/Mouse/Rat

**PRODUCT PROPERTIES**

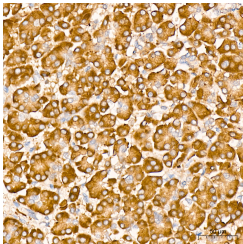
<b>Clonality</b>	Monoclonal
<b>Clone ID</b>	S9MR
<b>Concentration</b>	Lot specific
<b>Conjugation</b>	Unconjugated
<b>Purification</b>	Affinity purification
<b>Dilution Range</b>	WB:1:500-1:1000 IHC-P:1:500-1:1000 IF/ICC:1:50-1:200 ELISA:Recommended starting concentration is 1 µg/mL. Please optimize the concentration based on your specific assay requirements.
<b>Formulation</b>	PBS with 0.02% Sodium Azide, 0.05% BSA, 50% Glycerol, pH 7.3.
<b>Isotype</b>	IgG
<b>Storage Instruction</b>	Store at -20°C for up to 1 year from the date of receipt, and avoid repeat freeze-thaw cycles.

**TARGET INFORMATION**

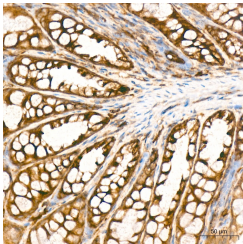
<b>Gene ID</b>	5036
<b>Gene Symbol</b>	PA2G4
<b>Uniprot ID</b>	PA2G4_HUMAN
<b>Immunogen</b>	
<b>Immunogen Region</b>	300-394
<b>Specificity</b>	Recombinant fusion protein containing a sequence corresponding to amino acids 300-394 of human EBP1/PA2G4 (NP_006182.2).
<b>Immunogen Sequence</b>	ELLQPFNVLYEKEGEFVAQF KFTVLLMPNGPMRITSGPFE PDLYKSEMEVQDAELKALLQ SSASRKTQKKKKKASKTAE NATSGETLEENEAGD



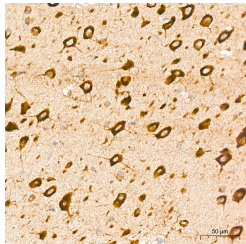
Immunofluorescence analysis of NIH-3T3 cells using EBP1/PA2G4 Rabbit monoclonal antibody (STJ11102259) at dilution of 1:100 (40x lens). Secondary antibody: Cy3 Goat Anti-Rabbit IgG (H+L) at 1:500 dilution. Blue: DAPI for nuclear staining.



Immunohistochemistry analysis of EBP1/PA2G4 in paraffin-embedded human pancreas tissue using EBP1/PA2G4 Rabbit monoclonal antibody (STJ11102259) at a dilution of 1:800 (40x lens). High pressure antigen retrieval was performed with 0.01 M citrate buffer (pH 6.0) prior to immunohistochemistry staining.



Immunohistochemistry analysis of EBP1/PA2G4 in paraffin-embedded mouse colon tissue using EBP1/PA2G4 Rabbit monoclonal antibody (STJ11102259) at a dilution of 1:800 (40x lens). High pressure antigen retrieval was performed with 0.01 M citrate buffer (pH 6.0) prior to immunohistochemistry staining.



Immunohistochemistry analysis of EBP1/PA2G4 in paraffin-embedded rat brain tissue using EBP1/PA2G4 Rabbit monoclonal antibody (STJ11102259) at a dilution of 1:800 (40x lens). High pressure antigen retrieval was performed with 0.01 M citrate buffer (pH 6.0) prior to immunohistochemistry staining.

This product is suitable for in-vitro studies under the RESEARCH USE ONLY [RUO] licence. This product must not be used as for diagnostic or other medical purposes.  
St John's Laboratory Ltd, Knowledge Dock Business Centre, University Way, London, E16 2RD | Tel: 0208 223 3081