

Anti-CRYAA antibody (6-95) [S7MR] (STJ11102257)

STJ11102257

GENERAL INFORMATION

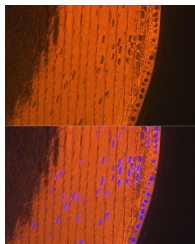
Product Type	Primary antibodies
Short Description	
Applications	WB/IF/ICC/ELISA
Host/Source	Rabbit
Reactivity	Mouse/Rat

PRODUCT PROPERTIES

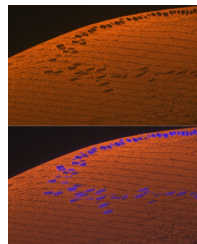
Clonality	Monoclonal
Clone ID	S7MR
Concentration	Lot specific
Conjugation	Unconjugated
Purification	Affinity purification
Dilution Range	WB:1:500-1:2000 IF/ICC:1:50-1:200 ELISA:Recommended starting concentration is 1 μ g/mL. Please optimize the concentration based on your specific assay requirements.
Formulation	PBS with 0.02% Sodium Azide, 0.05% BSA, 50% Glycerol, pH 7.3.
Isotype	IgG
Storage Instruction	Store at -20°C for up to 1 year from the date of receipt, and avoid repeat freeze-thaw cycles.

TARGET INFORMATION

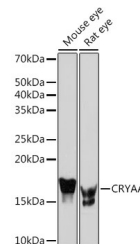
Gene ID	102724652/1409
Gene Symbol	CRYAA
Uniprot ID	CRYAA_HUMAN
Immunogen	
Immunogen Region	6-95
Specificity	Recombinant fusion protein containing a sequence corresponding to amino acids 6-95 of human CRYAA (P02489).
Immunogen Sequence	QHPWFKRTLGPFPYPSRLFDQ FFGEGLFYDLPFLSSTIS PYYRQSLFRTVLDSGISEVR SDRDKFVIFLDVKHFSPEDL TVKVQDDFVE



Immunofluorescence analysis of mouse eye using CRYAA Rabbit monoclonal antibody (STJ11102257) at dilution of 1:100 (40x lens). Blue: DAPI for nuclear staining.



Immunofluorescence analysis of rat eye using CRYAA Rabbit monoclonal antibody (STJ11102257) at dilution of 1:100 (40x lens). Blue: DAPI for nuclear staining.



Western blot analysis of extracts of various cell lines, using CRYAA Rabbit monoclonal antibody (STJ11102257) at 1:1000 dilution. Secondary antibody: HRP Goat Anti-Rabbit IgG (H+L) (STJS000856) at 1:10000 dilution. Lysates/proteins: 25 μ g per lane. Blocking buffer: 3% nonfat dry milk in TBST. Detection: ECL Basic Kit. Exposure time: 60s.

This product is suitable for in-vitro studies under the RESEARCH USE ONLY [RUO] licence. This product must not be used as for diagnostic or other medical purposes.
St John's Laboratory Ltd, Knowledge Dock Business Centre, University Way, London, E16 2RD | Tel: 0208 223 3081