

Anti-GATA2 antibody (1-210) [S6MR] (STJ11102246)
STJ11102246

GENERAL INFORMATION

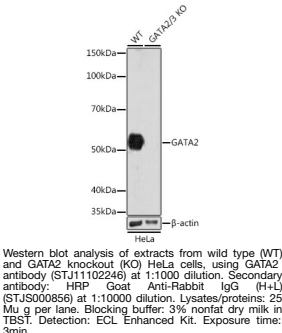
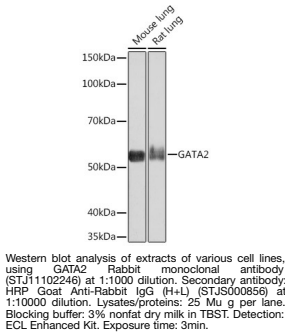
Product Type	Primary antibodies
Short Description	
Applications	WB/ELISA
Host/Source	Rabbit
Reactivity	Human/Mouse/Rat

PRODUCT PROPERTIES

Clonality	Monoclonal
Clone ID	S6MR
Concentration	Lot specific
Conjugation	Unconjugated
Purification	Affinity purification
Dilution	WB:1:500-1:1000
Range	ELISA:Recommended starting concentration is 1 Mu g/mL. Please optimize the concentration based on your specific assay requirements.
Formulation	PBS with 0.02% Sodium Azide, 0.05% BSA, 50% Glycerol, pH 7.3.
Isotype	IgG
Storage Instruction	Store at -20°C for up to 1 year from the date of receipt, and avoid repeat freeze-thaw cycles.

TARGET INFORMATION

Gene ID	2624 2625
Gene Symbol	GATA2 GATA3
Uniprot ID	GATA2_HUMAN GATA3_HUMAN
Immunogen	1-210
Region	
Specificity	Recombinant fusion protein containing a sequence corresponding to amino acids 1-210 of human GATA2/3 (NP_116027.2).
Immunogen Sequence	MEVAPEQPRWMAHPAVLNAQ HPDSHHPGLAHNYMEPAQLL PPDEVVFFNHLDSQGNPY ANPAHARARVSYSPAHARLT GGQMCRPHLLHSPGLPWLDG GKAALSAAAAHHNPWTVSP FSKTPLHPSAAGGPGGPLSV YPGAGGSGGGSGSSVASLT PTAAHSGSHLFGFPPTPPKE VSPDPSTTGAASPASSAGG SAARGEDKDG



This product is suitable for in-vitro studies under the RESEARCH USE ONLY [RUO] licence. This product must not be used as for diagnostic or other medical purposes.
St John's Laboratory Ltd, Knowledge Dock Business Centre, University Way, London, E16 2RD | Tel: 0208 223 3081