

Anti-PSME1 antibody (1-115) [S9MR] (STJ11102239)

STJ11102239

GENERAL INFORMATION

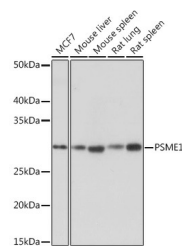
Product Type	Primary antibodies
Short Description	
Applications	WB/ELISA
Host/Source	Rabbit
Reactivity	Human/Mouse/Rat

PRODUCT PROPERTIES

Clonality	Monoclonal
Clone ID	S9MR
Concentration	Lot specific
Conjugation	Unconjugated
Purification	Affinity purification
Dilution Range	WB:1:500-1:1000 ELISA:Recommended starting concentration is 1 µg/mL. Please optimize the concentration based on your specific assay requirements.
Formulation	PBS with 0.02% Sodium Azide, 0.05% BSA, 50% Glycerol, pH 7.3.
Isotype	IgG
Storage Instruction	Store at -20°C for up to 1 year from the date of receipt, and avoid repeat freeze-thaw cycles.

TARGET INFORMATION

Gene ID	5720
Gene Symbol	PSME1
Uniprot ID	PSME1_HUMAN
Immunogen	
Immunogen Region	1-115
Specificity	Recombinant fusion protein containing a sequence corresponding to amino acids 1-115 of human PSME1 (NP_006254.1). MAMLRVQPEAQAKVDVFRED LCTKTENLLGSYFPKKISEL DAFLKEPALNEANLSNLKAP LDIPVPDPVKEKEKEERKKQ
Immunogen Sequence	QEKEDEKDEKKKGEDEKGGPP CGPVNCNEKIVVLLQ



Western blot analysis of extracts of various cell lines, using PSME1 Rabbit monoclonal antibody (STJ11102239) at 1:1000 dilution. Secondary antibody: HRP-Goat Anti-Rabbit IgG (H+L) (STJ5000856) at 1:10000 dilution. Lysates/proteins: 25 µg per lane. Blocking buffer: 3% nonfat dry milk in TBST. Detection: ECL Basic Kit. Exposure time: 1s.

This product is suitable for in-vitro studies under the RESEARCH USE ONLY [RUO] licence. This product must not be used as for diagnostic or other medical purposes.
St John's Laboratory Ltd, Knowledge Dock Business Centre, University Way, London, E16 2RD | Tel: 0208 223 3081