

Anti-CUL4A antibody (660-759) [S5MR] (STJ11102235)

STJ11102235

GENERAL INFORMATION

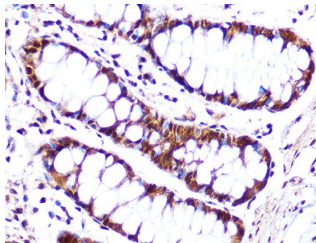
Product Type	Primary antibodies
Short Description	
Applications	WB/IHC-P/ELISA
Host/Source	Rabbit
Reactivity	Human

PRODUCT PROPERTIES

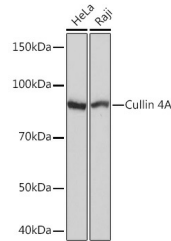
Clonality	Monoclonal
Clone ID	S5MR
Concentration	Lot specific
Conjugation	Unconjugated
Purification	Affinity purification
Dilution Range	WB:1:500-1:2000 IHC-P:1:50-1:200 ELISA:Recommended starting concentration is 1 µg/mL. Please optimize the concentration based on your specific assay requirements.
Formulation	PBS with 0.02% Sodium Azide, 0.05% BSA, 50% Glycerol, pH 7.3.
Isotype	IgG
Storage Instruction	Store at -20°C for up to 1 year from the date of receipt, and avoid repeat freeze-thaw cycles.

TARGET INFORMATION

Gene ID	8451
Gene Symbol	CUL4A
Uniprot ID	CUL4A_HUMAN
Immunogen	
Immunogen Region	660-759
Specificity	A synthetic peptide corresponding to a sequence within amino acids 660-759 of human Cullin 4A (Q13619).
Immunogen Sequence	FKHKLFRIKINQIMKETVE EQVSTTERVFQDRQYQIDAA IVRIMKMRKTLGHNLLVSEL YNQLKFPVKPGDLKKRIESL IDRDYMERDKDNPNQYHYVA



Immunohistochemistry analysis of paraffin-embedded human colon using Cullin 4A Rabbit monoclonal antibody (STJ11102235) at dilution of 1:100 (40x lens). Perform microwave antigen retrieval with 10 mM Tris/EDTA buffer pH 9.0 before commencing with immunohistochemistry staining protocol.



Western blot analysis of extracts of various cell lines, using Cullin 4A Rabbit monoclonal antibody (STJ11102235) at 1:1000 dilution. Secondary antibody: HRP-Goat Anti-Rabbit IgG (H+L) (STJS000856) at 1:10000 dilution. Lysates/proteins: 25 µg per lane. Blocking buffer: 3% nonfat dry milk in TBST. Detection: ECL Basic Kit. Exposure time: 3s.

This product is suitable for in-vitro studies under the RESEARCH USE ONLY [RUO] licence. This product must not be used as for diagnostic or other medical purposes.
St John's Laboratory Ltd, Knowledge Dock Business Centre, University Way, London, E16 2RD | Tel: 0208 223 3081